

Appendix E

Cultural Resources Information

Appendix E1 - Archaeological Resources Report

Date: July 3, 2020

To: Claudia Garcia, Ascent Environmental.

From: John Holson

Subject: Technical Memo For Cultural Resource Studies, UC Santa Cruz, Long Range Development Plan.

Pacific Legacy has prepared this memo to assist Ascent Environmental in preparing the Cultural Resources Section of the UC Santa Cruz, Long Range Development Plan (LRDP) Environmental Impact Report. Below are our findings and sections for the LRDP.

ENVIRONMENTAL SETTING

Regional Prehistory

The earliest confirmed evidence of prehistoric occupation in the Santa Cruz region comes from an archaeological site (CA-SCR-177) located 4 miles northeast of the campus in the Santa Cruz Mountains near Scotts Valley. Cartier (1993) postulated that CA-SCR-177 may date to approximately 10,000 years before present (BP). This is supported by the California Central Coast Chronology (Jones et al. 2007), which posits prehistoric life in the region extending to 10,000 years BP or earlier. While few sites have been identified from the Paleoindian through the Early Archaic (8000 to 5000 BP) periods in the Santa Cruz area, numerous sites have been dated to the Middle Archaic (5000 BP to 3000 BP) and Late Archaic (3000 BP to 1000 AD) periods. The Late Prehistoric Period (1000 to about 1600 AD) has been identified from at least one site near Santa Cruz (Fitzgerald and Ruby 1997; Hylkema 1991). Archaeological evidence indicates that Native groups in the region participated in extensive trade networks. They successfully pursued a wide range of subsistence practices in hunting large and small terrestrial and marine animals, fishing and shell fishing, and plant food gathering and processing and had extensive technological expertise in bow making (after about 500 AD), basketry, and the use of boats. As throughout much of Central California, acorns were an important plant food staple.

Archaeological testing at several sites on the UCSC campus in the 1960s (Edwards et al. 1983, Eastman, Stafford, and Buckman 1973) reportedly resulted in the recovery of two human burials and nearly 1,300 artifacts. Artifact types and radiocarbon dates suggest campus lands were occupied by Native inhabitants as early as 5,500 BP (3550 BC) to as recently as 200 BP (1750 AD).

The Monterey Bay area provided a wide range of resources that were important to Native

Americans. In addition to well-known plant and animal foods, important locally available resources included Monterey banded chert, which was used for the manufacture of chipped stone tools such as arrowheads. The bay was also an exceptional source of abalone (*Haliotis* sp.) and olive snail (*Olivella* sp.) shells. These served as raw material for the manufacture of shell ornaments and beads that were traded throughout California and much of the West, and they were important wealth items that were often deposited in graves.

Jones et al. (2007) acknowledged the importance of subsistence, settlement, and ecology in developing models of culture change for the Central Coast and adjacent inland areas, but employed a chronological system that focused on the significant variability and stylistic/typological transitions seen in artifact assemblages across the region. Their synthetic study included sites from Ano Nuevo, Santa Cruz, and the broader Monterey Bay south to Pismo Beach, and their chronological system relied on six key periods (Paleo-Indian, pre-8000 BC; Millingstone, or Early Archaic, 8000 to 3500 BC; Early, 3500 to 600 BC; Middle, 600 BC to AD 1000; Middle/Late Transition, AD 1000 to 1250; and Late, AD 1250 to 1769). Three cultures (the Millingstone Culture, the Hunting Culture, and the Late Period) were used to describe broader social patterns (Jones et al. 2007).

The Millingstone Culture is the earliest well-established sequence and dates to the Millingstone or Early Archaic Period (8000 to 3500 BC). This period is defined by the presence of large numbers of handstones, millingslabs, expedient core tools, and lesser quantities of flaked stone tools and large side-notched projectile points. Contracting stemmed points, lanceolate points, and crescents have also been recovered from Millingstone levels. Artifactual and faunal evidence indicates a wide variety of mammals, shellfish, birds, and to a lesser degree fish were collected. The Millingstone groundstone assemblage also suggests vegetal matter was processed on rock slabs rather than in shaped bowl mortars. However, preservation of faunal and floral remains is poor. Millingstone occupations have been located in a variety of settings from the coast to nearshore interior valleys. Faunal remains indicate a varied diet that included shellfish, fish, birds, and mammals, especially deer and rabbits.

The Hunting Culture spans the Early and Middle Periods (3500 to AD 1000) and is defined by an abundance of stemmed and notched projectile points and large bifaces. The Early Period is marked by the presence of contracting stemmed, Rossi square-stemmed, and large side-notched projectile points generally thought indicate dart or spear hunting of large and small mammals. Groundstone assemblages include handstones, pitted stones, and portable mortars and pestles. Bipointed bone gorges used for line fishing and Class L rectangular *Olivella* beads also appear in the Early Period. Middle Period sites indicate stylistic changes in stone technology from the earlier square stemmed and large side-notched projectile points. Middle Period stone tools include contracting-stemmed and large-stemmed points, but no square-stemmed or large side-

notched points. Groundstone artifacts consist of slabs, handstones, portable mortars, and pestles. *Olivella* G2 saucer beads replace earlier Class L beads. Bone gorges are still present along with circular shell fishhooks. Pitted stones and grooved stone net sinkers are common. Hunting Culture sites occur mainly in coastal areas but extend into nearby valleys as well. Faunal remains include deer, rabbits, sea otters, birds, and fish with preferences dependent on locale. Acorns may also have been part of the Hunting Culture diet.

The Middle/Late Transition Period (AD 1000 to 1250) exhibits increasing numbers of arrow points and decreasing numbers of stemmed points indicating more reliance on the bow and arrow which was gradually replacing the use of spears for hunting. The Late Period AD 1250 to 1769) is defined by the abundance of Desert side-notched and Cottonwood arrow points. Small serrated points and contracting-stemmed points are present at some sites. Other artifacts include bedrock mortars, hopper mortars, several bead types (Class E lipped, Class K cupped, steatite disk, and Class M rectangular), small bifacial bead drills, and circular fishhooks. Unlike earlier periods, Late Period sites are more common in the interior than on the coast.

The historic period began in earnest when early Spanish explorers made extensive forays up the Central Coast (Jones et al. 2007). Sebastián Vizcaíno landed in the area of Monterey in 1602. Long term contact with Native American inhabitants intensified with the Portolá overland expedition in 1769-1770, which camped along the San Lorenzo River, and the establishment of Mission Santa Cruz in 1771. The Spanish referred to the indigenous population in this region as *Costaño* or "coast people." Historically, they have become known as Costanoan. Levy (1978:485) suggests that in 1770, just before missionization, the Costanoan group was made up of approximately 50 politically autonomous nations and tribelets. At that time, the UCSC area was occupied by a tribal group identified as the Uypi which occupied the mouth of the San Lorenzo River (Milliken 1995: Appendix 1).

Mission life, non-Native diseases, and cultural disruption took a severe toll on the Costanoan population. One effect was that groups of mixed ethnicities congregated in a few Native communities. In many cases, these individuals are identified in records (such as those of the Indian Land Claims Act) only as "Mission Indian." Thus, it is now often difficult or impossible to trace descendants from a specific locale. Many descendants of the San Francisco Bay and Monterey Bay regions identify themselves as Ohlone.

Ethnography

The Costanoan language group comprises seven closely related languages (Shipley 1978). These languages were spoken throughout a large area extending from the San Francisco Bay southward along the coast to Point Sur and inland to the Diablo Range and portions of the

northern San Joaquin Valley (Milliken 1995). The term “Costanoan” is misleading, however as it amalgamates the 10,000 or more people who lived in the region into a single ethnolinguistic unit. In reality, the term “Costanoan” subsumes as many as 40 or 50 politically independent groups, some of which spoke mutually unintelligible but genetically related languages.

Many present-day Native descendants prefer the term Ohlone, which is said to have derived from the name of a coastal village in San Mateo County (Levy 1978). Knowledge of Ohlone culture is largely based on information gathered from Spanish expeditions between 1769 and 1776, documents maintained at missions, the works of ethnographers and linguists, and from Ohlone descendants. Primary ethnographic sources include Harrington (1933, 1942) and Kroeber (1925), while overviews are provided in Heizer (1974), Levy (1978), Margolin (1978), and Milliken (1983, 1991, 1995). Galvan (1968) and Williams (1890) offer Native accounts of Ohlone history, and an excellent example of contemporary ethnohistory can be found in Cambra et al. (1996).

The 18th century Ohlone tribelet that lived the vicinity of Mission Santa Cruz was recorded in mission records as Uypi (King 1994; Milliken 1994). Other linguistic dialect groups of Ohlone peoples in the vicinity included the Cotoni (Davenport area), Achistaca (Boulder Creek area), Sayanta (Zayante area), and Aptos (Aptos area) (Millikin 1988). The precise population of the contact period Uypi is uncertain, but Millikin noted that around 500 to 700 Native Americans from the Santa Cruz County area were taken to Mission Santa Cruz between 1791 and 1797 (Dietz in Rodrigues et al. 1992:6; Millikin 1985). Demographic studies by R.H. Jackson (1983) estimated an Ohlone population in the Santa Cruz area at around 1,700 persons at the time of contact. Given what is known about population demographics in the area, this suggests that at least one pre-contact or contact period village was present in the UCSC vicinity.

Spanish missionization, and the introduction of European diseases for which most Native American inhabitants had little natural resistance, resulted in rapid and dramatic Native population declines. Subsequent persecution and suppression of Native cultural expressions by Spanish, Mexican, and American colonizers contributed to the transformation of traditional culture. Today, a number of Ohlone tribes remain active in Santa Cruz County, including the Amah Mutsun Tribal Band, the Costanoan Ohlone Rumsen-Mutsen Tribe, and the Indian Canyon Mutsun Band of Costanoan, among others.

REGIONAL HISTORY

Regional Overview

In 1769, the Portolá expedition was the first non-Native exploration party to visit the area between the San Lorenzo River and Wilder Creek. A mission, *La Misión de la Exaltación de la*

Santa Cruz, was established in Santa Cruz near the San Lorenzo River in 1791 as part of Spanish colonization efforts in Alta California. Campus lands likely were used by the mission for grazing and/or agricultural fields (Rodrigues et al. 1992; Hoover et al. 1990; Edwards and Kimbro 1986). It is possible that lime for plaster and whitewash may have been produced locally as well, since high quality limestone and wood for firing were readily available at that time (Rodrigues et al. 1992; Piwarzyk 1994), though this has not been documented.

After Mexico won its independence from Spain in the 1820s, the Mexican government began the secularization of church lands. Starting in 1834, mission properties were distributed among Spanish and Mexican immigrants, though rarely among Native American citizens. The lands that became the UCSC campus made up portions of three Mexican-era land grants: *Rancho de la Cañada del Rincon en el Rio San Lorenzo de Santa Cruz* (Rancho Rincon), *Rancho Zayante*, and *Rancho Rufugio*. Rancho Rincon was granted to Pierre “Pedro” Sansevain in 1843 (Rodrigues et al. 1992; Hoover et al. 1990; Pierce 1990). Pierre Sansevain was a French immigrant who married into the Suñol family and built a lumber and milling business. By the 1850s, there were also two lime kilns producing quicklime on the rancho (Perry et al. 2007:20). In the 1840s, relations between Mexico and the US became strained as the US expanded westward towards the Pacific Ocean. Political stresses erupted into the Mexican-American War of 1846-1848. At the close of the war, Alta California became part of the US with the signing of the Treaty of Guadalupe Hidalgo.

In 1848, Mexico ceded California to the US, and California quickly attained statehood in 1850. This was due in part to the discovery of gold near Sacramento in 1848. The major influx of settlers resulted in a rapid increase in demand for goods and services, including house-building supplies. At that time, quicklime, a principal ingredient in mortar, plaster, and stucco, was shipped from the east around Cape Horn, making it very expensive. In 1851, entrepreneurs Isaac Davis and Albion Jordan discovered that high-quality limestone was available in Santa Cruz, and they bought a 160-acre parcel on the future campus site near High and Bay Streets. There they constructed three lime kilns for the production of quicklime. Davis and Jordan produced 21,000 barrels of lime in 1855, one third of Santa Cruz County’s production in that year (Rodrigues et al. 1992).

When Albion Jordan retired in 1863, Isaac Davis entered a partnership with Henry Cowell. The lime business flourished, and by 1865 the Cowell and Davis Lime Company was operating eight lime kilns, including the original kilns near the main campus entrance, the Upper Quarry Kiln on the Upper Quarry rim, the Bridge Kiln near McLaughlin Drive, and the Elfland Kiln near College Ten. By 1880, the company had become one of the three largest lime companies in California (Rodrigues et al. 1992; Eselius 2003). The business included quarrying and lumbering operations, a wooden tramway for hauling limestone and lumber, a cooperage to manufacture

barrels for shipping, a drayage operation to transport the barrels to the warehouse and wharf, and company schooners to transport the material to San Francisco for shipping. A ranch home, workmen's houses, a carriage house, and other facilities also were established on the campus site along with agricultural operations in support of the lime production business.

In 1888, when Davis died, Henry Cowell took control of the entire lime company operation and land holdings, renaming it the Henry Cowell Company (later, the Henry Cowell Lime and Cement Company). When Henry Cowell died in 1903, his son Ernest Cowell took over management of the family business. Because much of the easily accessible redwood had been logged, and in response to improved quicklime production technology, Ernest introduced a new oil-burning lime kiln, which was constructed adjacent to the other kilns. The demand for quicklime, however, had already begun to decline. The Santa Cruz Portland Cement Company, which opened in Davenport in 1905, began producing cement with superior building qualities. In 1906, the devastating San Francisco earthquake demonstrated that brick and mortar were not the best building materials for this region. The Cowell quicklime operations began a major decline, and the lime kiln complex near the main campus entrance was shut down during the early decades of the 20th century, though the Upper Quarry and other kilns on the campus site continued to operate until 1946 (ESA 2001:25, 30; Rodrigues et al. 1992).

During the first decades of the 20th century, agricultural operations on the Cowell property became more important as quicklime mining declined and the Cowells started leasing grazing land, though quarrying continued sporadically for several decades (Rodrigues et al. 1992). Ernest Cowell died in 1955, and the subsequent S.H. Cowell Foundation continued to manage the property (MacDougall 1989:14). The property became known as Cowell Ranch, and leases for agricultural and grazing persisted into the 1960s. One lessee was local rancher Les Strong, who leased Cowell land from 1950 into the early 1960s. Strong raised cattle and grew hay and flax for livestock feed (Perry 2015:1, 5-6; 2020:4-5).

Another use of the ranch lands was community oriented. The City of Santa Cruz built a reservoir on the western side of Cowell Ranch in 1890 as part of its first public water system. The reservoir, which dammed off Moore Creek with three earthen dams, leaked badly and was abandoned in 1948. Land ownership reverted to the Cowell Ranch at that time (Clark 1986:85). The reservoir later became the site of the UCSC Arboretum and Botanical Gardens in the mid-1960s (UCSC Arboretum 2020).

City of Santa Cruz

Father Junípero Serra and Captain Gaspar de Portolá began land-based exploration and settlement of Alta California in 1769. While the Portolá party rested at the Pajaro River, a group

of scouts headed by Sergeant José Francisco Ortega discovered the San Lorenzo River. Mission Santa Cruz, founded in 1791, was the first permanent European settlement in the Santa Cruz area (Clark 1986; Hoover et al. 1990). The first site of the mission was flooded by the San Lorenzo River in the winter of 1791 and was rebuilt over the next several years on the hillside above it. Diego de Borcia, then the Governor of Alta California, selected the Santa Cruz area as the best location to fortify Spanish holdings against the colonial interests of Russia, France, and Great Britain and established *Pueblo de Branciforte* in 1797 on a bluff across the San Lorenzo River from the mission. Branciforte remained a separate settlement until 1905 when it was incorporated into the City of Santa Cruz (Clark 1986:42). After Mexico became independent from Spain and secularized the missions (1833 to 1834), the site of Mission Santa Cruz (at the mission's second location, completed in 1794) became Holy Cross Church. The Mission Hill community surrounding it was a center of commercial, political, and religious activity during the Spanish and Mexican periods and transitioned into the American Period (Tunheim 1975).

Santa Cruz County (first called Branciforte County) was established in 1850 as one of California's original 27 counties. The Gold Rush of 1848 caused a huge influx of settlers to northern California, and Santa Cruz County grew and enjoyed a prosperous economy based on logging, lime processing, agriculture, and commercial fishing. The City of Santa Cruz was granted a legislative charter in 1866 and was incorporated in 1876 (Hoover et al. 1990). The city soon became a prominent resort community in California. One of the first saltwater baths west of the Mississippi was established there by Mary Lidell in 1864, followed by the Neptune Baths in the 1890s (Gaudinski 2015). In 1904 to 1907, Fred Swanton developed his boardwalk at the same location, which included a casino, heated indoor pool, and 500 dressing rooms. In 1912, a carousel was added, and the Giant Dipper roller coaster was installed in 1924, which continues to draw summer crowds to this day (Gaudinski 2015).

University of California, Santa Cruz

In 1951, plans were begun for the construction of a new campus within the University of California system in the southern Central Coast region. By 1961, The Board of Regents of the University of California system had chosen Santa Cruz as the location of the new campus. The campus was planned by architect John Carl Warnecke and landscape architect Thomas Church, and the design was based on the Oxford and Cambridge University model of small, independent liberal arts colleges (Garret 1967:67, Fischer 1968:12). The campus was conceived as a group of "scholarly villages," with each village representing a different academic discipline. The colleges were designed to be semi-autonomous in function and distinct in architectural and academic style. Each college and its associated libraries, walkways, and dormitories were all designed to appear and function as integral parts of the immediate natural landscape (Carter 1971:154).

The 2300 Delaware Avenue parcel had a different focus. In the 19th to the early 20th century, the future UCSC property was owned by the Woolf, Chace, and Leek families just north of the Hall dairy farm and east of Moore Creek (Hatch 1889; Punnett Brothers 1906). In 1908, the San Vicente Lumber Company sawmill dammed Moore Creek where it now passes into Natural Bridges State Beach and formed a log pond that the Ocean Shore Railroad also used as a trestle. The sawmill shipped its lumber using the Ocean Shore Railroad from 1909 to 1923, when the lumber company moved to Plumas County. The rails were removed, and the rail grade eventually became Delaware Avenue (Griggs 2019; Whaley 2014). The pond and the surrounding land then became the Antonelli Brothers' begonia gardens and farm during the ca. 1930s through ca. 1980 (Griggs 2019; Taylor 2009). Between 1982 and 1994, the Land Trust of Santa Cruz County acquired the pond and land to the west (Land Trust of Santa Cruz County 2020). The land to the east of the pond, between Delaware Avenue and the Southern Pacific Railroad tracks, was acquired by UCSC in the early 1980s. By 1982, the current building complex was erected (NETROnline 2020). In 2019, the UCSC Westside Research Park became the home of the UCSC Genomics Institute, based in the Baskin School of Engineering (Stephens 2019).

ARCHAEOLOGY ON CAMPUS

Archaeological and Historical Resource Inventories

The first archaeological sites identified on the UCSC campus were recorded in 1956, though the first formal archaeological survey of the campus was not conducted until 1974. Between 1975 and 2004, at least 48 cultural resource studies were completed on the campus, at least 22 of which included archaeological surveys. At various intensities, these surveys covered much of the lower portion of the campus, scattered areas in the central campus, and one area in the north campus.

In 2005, Pacific Legacy conducted a mixed-strategy cultural resource survey of the entire campus (*see* Appendix A.) (Pacific Legacy 2005b). The objectives of the survey were to provide screening-level data on the archaeological and historical resource base for the entire campus; assess current conditions and update the records of previously recorded sites; and formally record resources that had been previously identified but not recorded (*see* Appendix B.). A total of 13 previously recorded sites were updated, including seven prehistoric (one further site was not relocated), and six historic period sites. The update for the Cowell Ranch Historic District (CA-SCR-198H/P-44-000200) included 10 separately recorded contributing features. During the 2005 survey, three newly identified historic period sites also were recorded (CA-SCR-359H/P-44-000586; CA-SCR-360H/P-44-000586, and CA-SCR-361H/P-44-000589), and assessments of their integrity and significance were provided to the extent permitted by surface inspection.

The 2005 study included an intensive archaeological survey (inspection of the ground in systematic pedestrian transects) of about 50 percent of the main campus and a non-intensive survey (inspection of all openings, trails and other exposed ground surfaces) of an additional 20 percent of the main campus. The majority of intensive survey has been on the lower one-third of the campus. Within the central campus, survey work focused around areas in which previously known sites and historic period features had been recorded, and areas where development was anticipated under the 2005 LRDP. About 40 percent of the north campus area was surveyed, with emphasis on known site vicinities, open areas, and areas around seeps and springs. Throughout the campus, areas that have not been intensively surveyed include steep drainages, heavily forested or densely vegetated areas, and heavily developed/paved areas. To date, a total of 114 studies focused on the campus have been completed (*see* Appendix C.). At least 40 of these were surveys, while the remainder included subsurface testing and excavations, historical research, evaluations, and/or archaeological monitoring. More recent surveys have been project-specific in limited areas of the campus.

An archaeological survey of the 2300 Delaware Avenue property was conducted in 2005 (Morgan 2005). Approximately 90 percent of the property is covered by buildings, paving, or landscaping, so the natural ground surface could be inspected only along an unpaved trail at the western margin of the property. The buildings at 2300 Delaware Avenue, because of their recent construction date (ca. 1980), were not recorded or evaluated as historical structures.

In addition to the 2005 archaeological survey, an inventory of potential historic period buildings was conducted on campus. The date or approximate date of construction of each building was determined, and each building more than 50 years of age was photographed and documented on State Park record forms. A historical context statement also was prepared as the basis for the evaluation of the Cowell Ranch Historic District and related features.

Known Resources Prehistoric and Historical Resources

Record and Literature Review

As a part of a comprehensive record and literature review, Pacific Legacy inspected internal reports and resource records that were gathered for the 2005 LRDP and for subsequent work (*see* Appendices B. and C.). Pacific Legacy also received reports from Ascent Environmental relevant to cultural resources within the study area. On March 27, 2020, Pacific Legacy requested an archival and records search of the project area through the Northwest Information Center (NWIC) of the California Historical Resources Information System (CHRIS) at Sonoma State University. A response was received on April 21, 2020 (NWIC File No. 19-1702). Sixty-eight cultural resource studies had been assigned study numbers by the NWIC. An additional 46 reports were noted from records on file with Ascent and Pacific Legacy. A listing of these

studies is included as Appendix A. A total of eight prehistoric resources have been recorded within the main campus area while none have been recorded for the Delaware Street Campus. Twelve historic period resources have been recorded on the main campus and none have been recorded at the Delaware Street Campus.

The archival and records search fully encompassed the main campus parcel since the Delaware Avenue parcel was fully developed and mostly paved at the time of the previous 2005 LRDP and subject to a previous negative study. Reports collected included references to archaeological and historic period DPR forms and reports within the project survey area. While several built environment resources are addressed in a different section.

In addition to the record review, the archival and records search included a review of the following:

- The Historic Properties Directory (California Office of Historic Preservation (2013));
- The California Inventory of Historic Resources (State of California (1976));
- California Historical Landmarks (California Office of Historic Preservation (1996));
- California Points of Historical Interest listing May 1992 (State of California 1992); and
- The National Register of Historic Places (NRHP) (Directory of Determinations of Eligibility, California Office of Historic Preservation, Volumes I and II, 1990; Office of Historic Preservation Computer Listing 1990 and updates).

Historic maps and documents concerning the general area on file at the Berkeley office of Pacific Legacy along with digital archives of previously conducted studies and known cultural resources within the Project area were also reviewed.

Archaeological Sites

Prehistoric Archaeological Sites

Eight prehistoric archaeological sites and three prehistoric isolated finds (resources consisting of three or fewer artifacts) have been identified on the UCSC main campus. No prehistoric sites have been newly recorded on the main campus or on the 2300 Delaware Avenue property since 2005. Although five of the eight prehistoric sites were subject to test excavations in the 1960s and 1970s, none has been formally evaluated for listing in the California Register of Historical Resources (CRHR). Two of the sites include habitation deposits (CA-SCR-3/P-44-000011 and CA-SCR-160/P-44-000163), and burials were reportedly recovered from a third possible habitation site (CA-SCR-4/P-44-00012). These three sites have the potential to yield important information and may be eligible for listing in the CRHR.

The remaining five sites are recorded as lithic scatters (scattered chipped stone tool manufacture debris), several with Monterey-banded chert: CA-SCR-94/P-44-00098, CA-SCR-142/P-44-

000145, CA-SCR-143/P-44-000146, CA-SCR-180/P-44-000182, and CA-SCR-181/P-44-000183. The last site, CA-SCR-181/P-44-000183, was not relocated in 2005. In general, the boundaries of these sites are not well defined, it has been difficult to accurately relocate these sites in subsequent surveys, and it is unclear whether the deposits have subsurface components. These sites have been assumed eligible for listing in the CRHR, however for management and preservation purposes until their significance can be documented through archaeological testing. The prehistoric isolated finds (with field number designations only) include two with a single Monterey-banded chert flake and a third with three Monterey-banded chert flakes. Isolated finds are assumed not eligible for listing in the CRHR because they offer extremely limited data potential. Because the presence of isolated artifacts can signal an undiscovered archaeological deposit, however, these finds have been mapped on the campus confidential cultural resources map.

Human Remains

No historic period burials or cemeteries are known or have been encountered on the UCSC main campus or on the Delaware Avenue parcel. Two prehistoric burials were reportedly recovered however from site CA-SCR-4 in the 1960s, presumably during UCSC archaeological field school excavations (Edwards et al. 1983). The 1973 site records for CA-SCR-3 and adjacent CA-SCR-4 note that excavations were conducted by UCSC in 1969 (Stafford 1973), and that one deep saucer-shaped depression and one slight depression were visible (Eastman, Stafford, and Buckman 1973).

Historic Period Archaeological Sites and Features

Ten historic period sites, two historic period districts, and 19 historic period isolated finds or features have been identified on the UCSC main campus. No sites or isolated finds have been identified on the 2300 Delaware Avenue property. The historic period sites on the main campus include the Cowell Ranch site (CA-SCR-198H), an extensive complex of extant 19th and 20th century buildings, structures, and associated archaeological features, as well as several other related archaeological sites (CA-SCR-182H, CA-SCR-183H, and CA-SCR-361H) that include railroad, quarrying, and lime kiln features associated with quicklime production at Cowell Ranch between about 1851 and 1946. Other recorded sites (CA-SCR-184H, CA-SCR-185H, CA-SCR-186H, CA-SCR-277, and CA-SCR-424H) include features likely associated with the agricultural activities at Cowell Ranch in the late 19th to early 20th century. Based on their locations, two sites may not be directly associated with Cowell Ranch; these include a habitation site (CA-SCR-262H) and domestic debris dump (CA-SCR-360H). Finally, one resource (CA-SCR-359H) served as the original City of Santa Cruz reservoir and is now occupied by the Arboretum.

There are two overlapping historic districts on the lower campus. The first is the Cowell Home Ranch District (P-44-000855), which includes standing ranch buildings, kilns, and quarries. It was originally nominated to the National Register of Historic Places (NRHP) in 2003 but was

not listed (Eselius 2006). During development of the 2005 LRDP, a UCSC consultant prepared a second NRHP nomination for the Cowell Lime Works Historic District (P-44000200/CA-SCR-198H). The District was clearly eligible for listing in the NRHP under Criterion A and in the CRHR under Criterion 1 for its role in the development of lime mortar manufacturing in California between 1851 and 1906. In their preliminary findings, Architectural Resources Group (ARG 2005) concluded that while the integrity of many of the buildings and features had been diminished through deterioration, physical damage from development, or adaptive reuse and thus no longer contributed to its significance, the district and many of its features retained their historical significance. UCSC and ARG completed the draft NRHP evaluation and district nomination and developed a specific historic district management plan for the resource in 2006 with the objective of maintaining the district's historical character (ARG 2006). The Cowell Lime Works Historic District was listed in the NRHP and CRHR in 2007 (NPS #07001220). In 2009, two archaeological features (P-44-000958 and UCSC-0906 in CA-SCR-198H) within the district boundaries were discovered and tested. Both features were assumed eligible for listing in the CRHR and recommended as contributing elements to the district.

Most of the other historic period sites documented on the main campus also are presumed eligible for listing in the CRHR for their potential to yield important historical data and for their association with important events, namely the economic development of Santa Cruz County, and particularly its quicklime industry. Several of the recorded sites may predate the Cowell Ranch period, such as the Elfland Kiln (CA-SCR-361H) and Upper Quarry Kiln and may offer contrasting and comparative data on the economy in Santa Cruz prior to the lime industry boom. One previously recorded site, SCR-277H (also known as CA-SCR-227H), does not appear to be eligible for listing in the CRHR. It consists of a historic period agricultural field and was recorded because it appeared on a 1931 aerial photo; today, it does not appear to retain any elements that suggest its historical character, and it has little potential to provide additional historical information beyond its recorded location.

In 2000 and 2005, 19 isolated and generally fragmentary features were recorded during surveys but were not formally recorded as archaeological sites (Beck 2000; Reese 2005a). These historic period features included four wood fence line segments; eight narrow (10-15 foot wide) unpaved ranch road segments; five stock troughs (both concrete and iron); a limestone and cement foundation with one trapezoidal pier and no associated artifacts; and a scatter of early 20th century artifacts representing at least three domestic and architectural artifacts. At the time of the recording, these were considered isolated finds rather than part of an integrated complex of ranching, agricultural, or mining features.

TRIBAL CULTURAL RESOURCES

Pacific Legacy personnel submitted requests to the Native American Heritage Commission (NAHC) for a search of the Sacred Lands File as it encompasses the two project areas on March 27, 2020 (area centered on the UCSC main campus) and May 11, 2020 (2300 Delaware Avenue) (see Appendix D.). Sarah Fonseca, Cultural Resources Analyst with the NAHC, responded to the first request on April 1, 2020 and to the second request on May 13, 2010. Native American cultural resources have been previously reported within both areas. The NAHC provided a list of five tribal representatives or individuals with a potential interest in and knowledge of Santa Cruz County and the project vicinity. All individuals on that list were contacted via email by Pacific Legacy on May 13, 2019. These individuals included Mr. Valentin Lopez, Chairperson of the Amah Mutsun Tribal Band; Ms. Irenne Zwierlein, Chairperson of the Amah Mutsun Tribal Band of Mission San Juan Bautista; Mr. Patrick Orozco, Chairman of the Costanoan Ohlone Rumsen-Mutsun Tribe; Ms. Ann Marie Sayers, Chairperson of the Indian Canyon Mutsun Band of Costanoan; and Ms. Monica Arellano of the Muwekma Ohlone Indian Tribe of the San Francisco Bay Area. The letter requested any information they may have regarding Native American cultural resources or areas of concern within the project area. Responses to those requests for contact are anticipated within 60 days (due to the Covid-19 proclamation by Governor Newsom) and will be forwarded to UCSC upon receipt.

To date, Mr. Lopez and Ms. Zwierlein have responded. Ms. Zwierlein responded via email on May 14, 2020. She emphasized that the NWIC should be contacted regarding any archaeological sites. Mr. Lopez, who also responded via email on May 14, 2020, requested follow-up contact to discuss the project further. All correspondence between Pacific Legacy, the NAHC, and Native American tribal representatives regarding the project is included in Appendix D.

Attachments:

- Appendix A. Maps
- Appendix B. Cultural Resources and Isolates Recorded on the UC Santa Cruz Campus
- Appendix C. Summary of Cultural Resource Literature
- Appendix D. Native American Contact

REFERENCES

Architectural Resources Group (ARG)

- 2001a Site record for CA-SCR-198H (P-44-000200): Cowell Ranch District/Cowell Lime Works Historic District. On file at the Northwest Information Center, California State University, Sonoma, Rohnert Park, California.
- 2001b Site record for CA-SCR-198H (P-44-000200): the Jordan and Davis lime kilns. On file at the Northwest Information Center, California State University, Sonoma, Rohnert Park, California.
- 2001c Site record for CA-SCR-198H (P-44-000200): Lower Quarry. On file at the Northwest Information Center, California State University, Sonoma, Rohnert Park, California.
- 2001d Site record for CA-SCR-198H (P-44-000200): Rail Bed. On file at the Northwest Information Center, California State University, Sonoma, Rohnert Park, California.
- 2005 Cowell Ranch, Revised Draft Historic District Evaluation, University of California, Santa Cruz, in progress. Draft on file at UC Santa Cruz Physical Planning and Construction Office.
- 2006 Getty Foundation Campus Heritage Grant, 2004, University of California, Santa Cruz. On file at University of California, Santa Cruz.

Beck, B.

- 2000 CDF Project Review Report for Archaeological and Historical Resources, Marshall Field 2000, Project #RXCZU015 (California Department of Forestry). Study S-023014 On file at the Northwest Information Center, California State University, Sonoma, Rohnert Park, California.

California Office of Historic Preservation

- 1990 *Directory of Determinations of Eligibility*, Volumes I and II. On file at the Northwest Information Center, California State University, Sonoma, Rohnert Park, California.
- 1996 *California Historical Landmarks*. On file at the Northwest Information Center, California State University, Sonoma, Rohnert Park, California.
- 2013 *Historic Properties Directory*. On file at the Northwest Information Center, California State University, Sonoma, Rohnert Park, California.

Cambra, R., A. Leventhal, L. Jones, J. Hammett, L. Field, N. Sanchez, and R. Jurmain

- 1996 Archaeological Excavations at Kaphan Umux (Three Wolves) Site, CA-SCL-732: A Middle Period Prehistoric Cemetery on Coyote Creek in Southern San Jose, Santa Clara County, California. Report on file, Santa Clara County Traffic Authority and the California Department of Transportation, California.

Carter, L. J.

1971 University of California at Santa Cruz: New Deal for Undergraduates. *Science*, Vol. 171, No. 3967. January 15, 1971:153-157.

Cartier, R.

1993 The Scotts Valley Site: CA-SCR-177. Santa Cruz Archaeological Society, Santa Cruz, California.

Cooper, J. M., and T. Jones

1983 Site record for CA-SCR-262H (P-44-000264). On file at the Northwest Information Center, California State University, Sonoma, Rohnert Park, California.

Clark, D. T.

1986 *Santa Cruz County Place Names, A Geographical Dictionary*. California Historical Trust, Santa Cruz, California.

Dessaux, L, D. Souza, J. Berman, and A. Shelly

1974 Site record for CA-SCR-94 (P-44-000098). On file at the Northwest Information Center, California State University, Sonoma, Rohnert Park, California.

Dexter, S., and M. K. Fitzgerald

2016 Site record for CA-SCR-424H (P-44-000867). On file at the Northwest Information Center, California State University, Sonoma, Rohnert Park, California.

Eastman, M., J. Stafford, T. Buckman

1973 Site record for CA-SCR-3 (P-44-000011). On file at University of California, Santa Cruz, California.

Edwards, R., J. M. Cooper, T. Jones

1983 Cultural Resource Evaluation of Several Possible Areas for a Proposed Research and Development Park and Housing, U.C.S.C. Santa Cruz County, California. On file at University of California, Santa Cruz, California.

Edwards, R., and E. Kimbro

1986 Mission Fields in the Great Meadow, University of California, Santa Cruz. On file, Environmental Assessment Group, University of California, Santa Cruz, California.

Edwards, R., and C. Simpson-Smith

1986 Site record for CA-SCR-277H (P-44-000276; a.k.a. CA-SCR-227H). On file at the Northwest Information Center, California State University, Sonoma, Rohnert Park, California.

Elliott, M.

2005a. Site record update for CA-SCR-4 (P-44-000012). On file at the Northwest Information Center, California State University, Sonoma, Rohnert Park, California.

Elliott, M.

2005b Site record update for CA-SCR-186H (P-44-000188). On file at the Northwest Information Center, California State University, Sonoma, Rohnert Park, California.

Environmental Science Associates (ESA)

2001 Coast Dairies Long-Term Resource Protection and Use Plan: Draft Existing Conditions Report for the Coast Dairies Property. Digital document, <https://history.santacruzpl.org/omeka/files/original/c44d4dec2501f654845b54bac2f26654.pdf>, accessed May, 2020.

Eselius, D.

2003 Letter to UC Santa Cruz Environmental Group regarding "UCSC Proposed Humanities and Social Sciences Facility Environmental Impact Assessment," April 25, 2003. On file at Pacific Legacy, Inc., Berkeley, California.

2006 Recording for Cowell Home Ranch District P-44-000855 (Included in CA-SCR198H/P-44-000200). On file at the Northwest Information Center, Sonoma State University, Rohnert Park, California.

Farley, M.

1977 Site record for CA-SCR-160 (P-44-000163). On file at the Northwest Information Center, Sonoma State University, Rohnert Park, California.

Fischer, J.

1968 The Easy Chair: A Different Kind of Campus, The Experiment at Santa Cruz. *Harper's Magazine*, Vol. 239, No. 1430. July 1968:12-83.

Fitzgerald, R. T., and A. Ruby

1997 Archaeological Test Excavations at CA-SCR-117, the Davenport Landing Site. Report prepared for U. S. Abalone, Inc., Davenport, California. Report on file at the Northwest Information Center, California State University, Sonoma, Rohnert Park, California.

Galvan, P. M.

1968 "People of the West": The Ohlone Story. *The Indian Historian* 1(2):9-13.

Garret, J. L.

1967 The Small College on the Big Campus: Santa Cruz after One Year. *Saturday Review*, Vol. 50, Jan. 21, 1967:67 and 79.

Gaudinski, J.

- 2015 The Santa Cruz Boardwalk: A Walk Back in Time. Digital article (9/14/2015), <https://www.santacruzwaves.com/2015/09/the-santa-cruz-boardwalk-a-walk-back-in-time/>, accessed June 2020.
- Griggs, G.
2019 Names behind Santa Cruz coastal sites. Sept. 29, 2019 Mercury News article digital document, <https://www.mercurynews.com/2019/09/29/names-behind-local-coastal-sites-gary-griggs-our-ocean-backyard/>, accessed, May, 2020.
- Harrington, J.
1933 Report of Fieldwork on Indians of Monterey and San Benito Counties. *Smithsonian Institution, Bureau of American Ethnology Annual Report for 1931-1932*: 2-3. Washington D.C.
- 1942 Cultural Element Distribution, XIX: Central California Coast. *University of California Anthropological Records* 7(1):1-146.
- Hatch, A. J.
1889 Official Map of the County of Santa Cruz, California. A. J. Hatch, Publisher, San Francisco. Digital image, <https://www.loc.gov/item/2007630403/>, accessed May, 2020.
- Heizer, R. F.
1974 *The Costanoan Indians*. Local History Studies 18, California History Center, De Anza College, Cupertino, California.
- Hoover, M. B., H. E. Rensch, E. G. Rensch, and D. E. Kyle.
1990 *Historic Spots in California*. Fourth Edition. Stanford University Press, Stanford, California.
- Hylkema, M. G.
1991 Prehistoric Native American Adaptations along the Central California Coast of San Mateo and Santa Cruz Counties. Master's Thesis, California State University, San Jose, California.
- Jackson, R. H.
1983 Disease and Demographic Patterns at Santa Cruz Mission, Alta California. *Journal of California and Great Basin Anthropology* 5(1, 2):33-57.
- Jones, T., N. Stevens, D. Jones, R. T. Fitzgerald, and M. G. Hylkema
2007 The Central Coast: Midlatitude Milieu. In, *California Prehistory: Colonization, Culture, and Complexity*, edited by Terry L. Jones and Kathryn A. Klar, pp. 125-147. Altamira Press, Lanham, Maryland.
- King, C.

- 1994 Central Ohlone Ethnohistory. In *The Ohlone Past and Present: Native Americans of the San Francisco Bay Region*, edited by L. J. Bean, pp. 203–228. Ballena Press, Menlo Park, California.
- Kroeber, A. L.
1925 *Handbook of the Indians of California*. Bureau of American Ethnology Bulletin 78. Washington D.C.
- Kunn, S.
1978 Site record for CA-SCR-186H (P-44-000188). On file at the Northwest Information Center, California State University, Sonoma, Rohnert Park, California.
- Land Trust of Santa Cruz County
2020 Antonelli Pond. Digital document, <https://www.landtrustsantacruz.org/category/protected-lands/antonelli-pond/>, accessed May 2020.
- Levy, R.
1978 Costanoan. In *Handbook of the Indians of North American, Volume 8: California*: pp.485-495. Edited by R.F. Heizer. Smithsonian Institution. Washington, D.C.
- Lönnberg, A.
1974 Site record for CA-SCR-94 (P-44-000098). On file at the Northwest Information Center, California State University, Sonoma, Rohnert Park, California.
- MacDougall, L.
1989 *Henry Cowell and His Family (1819-1955)*. S. H. Cowell Foundation, Santa Cruz. Santa Cruz Public Library digital document, <https://history.santacruzpl.org/omeka/files/original/b1ac726d2d5b6efbc080fe6d6c5412f7.pdf>, accessed May, 2020.
- Margolin, M.
1978 *The Ohlone Way: Indian Life in the San Francisco-Monterey Bay Area*. Heyday Books, Berkeley, California.
- Milliken, R.
1983 The Spatial Organization of Human Population on Central California's San Francisco Peninsula at the Spanish Arrival. Master's Thesis, California State University, Sonoma, Rohnert Park, California.
- 1985 The Historic Indians of Santa Cruz Mission. In *Como la Sombra Huye la Hora: Restoration Research*, Santa Cruz Mission Adobe, Santa Cruz Mission State Historic Parks, 36-48. Report submitted to Cultural Heritage Section, California Department of Parks and Recreation, Sacramento.

- 1988 Ethnographic Context. In, "Archaeological Investigations at Elkhorn Slough: CA-MNT- 229, a Middle Period Site on the Central California Coast." S. Dietz, W. Hildebrandt and T. Jones, eds. *Papers in Northern California Anthropology*, No. 3. Northern California Anthropological Group, Berkeley.
- 1991 Ethnographic Context, Ethnohistory, and Historic Context. In, Preliminary Evaluation of Thirteen Sites along Highways 101 and 152, Santa Clara and San Benito Counties, California. W. Hildebrandt and P. Mikkelsen, eds. Report on file at the California Department of Transportation, California.
- 1994 The Costanoan-Yokuts Language Boundary in the Contact Period. In, *The Ohlone: Past and Present, Native Americans of the San Francisco Bay Region*, pp. 165-181. Ballena Press Anthropological Papers No. 42. Edited by L. J. Bean. Ballena Press, Menlo Park, California.
- 1995 *A Time of Little Choice*. Ballena Press, Menlo Park, California.

Morgan, S. S.

- 2005 Memo of report of archaeological survey of 2300 Delaware Property. August 15, 2005. On file Physical Planning and Construction, University of California, Santa Cruz, California.

Nationwide Environmental Title Research, LLC (NETROnline)

- 2020 1952, 1968, and 1982 aerial photographs. Digital images, <https://www.historicaerials.com/viewer>, search: Delaware Avenue, Santa Cruz, California. Accessed May 2020.

Pacific Legacy, Inc.

- 2005 Baseline Inventory Report for the UC Santa Cruz Campus. Pacific Legacy, Incorporated. Santa Cruz, California. Manuscript on file at the University of California, Santa Cruz, Office of Physical Planning & Construction.
- 2006a Site record update draft for CA-SCR-198H (P-44-000200): Cabin G Feature. On file at Pacific Legacy, Inc. Berkeley, California.
- 2006b Site record update draft for CA-SCR-198H (P-44-000200): Cabin J Foundation. On file at Pacific Legacy, Inc. Berkeley, California.
- 2006c Site record update draft for CA-SCR-198H (P-44-000200): Cabin J Bank Footings. On file at Pacific Legacy, Inc. Berkeley, California.
- 2006d Site record update draft for CA-SCR-198H (P-44-000200): Cattle Chute. On file at Pacific Legacy, Inc. Berkeley, California.
- 2006e Site record update draft for CA-SCR-198H (P-44-000200): Feature K Platform. On file at Pacific Legacy, Inc. Berkeley, California.

2006f Site record update draft for CA-SCR-198H (P-44-000200): Fence Sections A, B1, B2, C. On file at Pacific Legacy, Inc. Berkeley, California.

2006g Site record update draft for CA-SCR-198H (P-44-000200): Hay Barn Cattle Trough. On file at Pacific Legacy, Inc. Berkeley, California.

2006h Site record update draft for CA-SCR-198H (P-44-000200): Ranch View Hilltop Trough. On file at Pacific Legacy, Inc. Berkeley, California.

2006i Site record update draft for CA-SCR-198H (P-44-000200): Water Tank. On file at Pacific Legacy, Inc. Berkeley, California.

Perry, F.

2015 On the Eve of UCSC (Interview with Les Strong). *Lime Kiln Chronicles*, Spring/Summer 2015:1, 5-6. 2020. An Interview with Richard Nutter. *Lime Kiln Chronicles* Spring/Summer 2020:1, 4-6.

Perry, F. A., R. W. Piwarzyk, M. D. Luther, A. Orlando, A. Molho, and S. L. Perry

2007 *Lime Kiln Legacies, the History of the lime Industry in Santa Cruz County*. The Museum of Art & History at the McPherson Center, Santa Cruz, California.

Pierce, M.

1990 *San Jose and Its Cathedral*. Western Tanager Press, Santa Cruz, California.

Piwarzyk, R. W.

1994 The Limekilns of the Pogonip. Lime Light. Parks and Recreation Department. Santa Cruz, California.

Punnett Brothers

1906 Official Map of the County of Santa Cruz. Punnett Brothers, San Francisco. UCSC Digital Map Collections image, <http://digitalcollections.ucsc.edu/cdm/ref/collection/p15130coll3/id/1692>, accessed May 2020.

Pryor, J.

1978a Site record for CA-SCR-180 (P-44-000182H). On file at the Northwest Information Center, California State University, Sonoma, Rohnert Park, California.

1978b Site record for CA-SCR-182 (P-44-000184). On file at the Northwest Information Center, California State University, Sonoma, Rohnert Park, California.

1978c Site record for CA-SCR-183H (P-44-000185). On file at the Northwest Information Center, California State University, Sonoma, Rohnert Park, California.

Pryor, J.

1978d Site record for CA-SCR-186H (P-44-000188). On file at the Northwest Information Center, California State University, Sonoma, Rohnert Park, California.

Randolf, R.

1956 Site Record for CA-SCR-3 (P-44-000011). On file at University of California, Santa Cruz, California.

Reese, E.

2005a Preliminary Cultural Resources Inventory, University of California, Santa Cruz. On file at University of California, Santa Cruz, California.

2005b Site record update for CA-SCR-3 (P-44-000011). On file at the Northwest Information Center, California State University, Sonoma, Rohnert Park, California.

2005c Site record update for CA-SCR-4 (P-44-000012). On file at the Northwest Information Center, California State University, Sonoma, Rohnert Park, California.

2005d Site record update for CA-SCR-94 (P-44-000098). On file at the Northwest Information Center, California State University, Sonoma, Rohnert Park, California.

2005e Site record update for CA-SCR-142 (P-44-000145). On file at the Northwest Information Center, California State University, Sonoma, Rohnert Park, California.

2005f Site record update for CA-SCR-160 (P-44-000163). On file at the Northwest Information Center, California State University, Sonoma, Rohnert Park, California.

2005g Site record update for CA-SCR-180 (P-44-000182). On file at the Northwest Information Center, California State University, Sonoma, Rohnert Park, California.

2005h Site record update for CA-SCR-184H (P-44-000186). On file at the Northwest Information Center, California State University, Sonoma, Rohnert Park, California.

2005i Site record update for CA-SCR-185H (P-44-000187). On file at the Northwest Information Center, California State University, Sonoma, Rohnert Park, California.

2005j Site record update for CA-SCR-198H (P-44-000200). On file at the Northwest Information Center, California State University, Sonoma, Rohnert Park, California.

2005k Site record update for CA-SCR-359H (P-44-000585). On file at the Northwest Information Center, California State University, Sonoma, Rohnert Park, California.

2006 Site record update for CA-SCR-198H (P-44-000200). On file at the Northwest Information Center, California State University, Sonoma, Rohnert Park, California.

2009 Recording for Cowell Home Ranch District P-44-000958 (Included in CA-SCR198H/P-44-000200). On file at the Northwest Information Center, California State University, Sonoma, Rohnert Park, California.

Reese, E., M. Elliott

- 2005a Site record update for CA-SCR-182H (P-44-000184). On file at the Northwest Information Center, California State University, Sonoma, Rohnert Park, California.
- 2005b Site record update for CA-SCR-183H (P-44-000185). On file at the Northwest Information Center, California State University, Sonoma, Rohnert Park, California.
- 2005c Site record update for CA-SCR-360H (P-44-000586). On file at the Northwest Information Center, California State University, Sonoma, Rohnert Park, California.
- 2005d Site record update for CA-SCR-361H (P-44-000589). On file at the Northwest Information Center, California State University, Sonoma, Rohnert Park, California.

Rodrigues, P., G. Sanchez, and S. Dietz

- 1992 Historic Cowell Ranch Cultural Landscape Report. On file, Environmental Assessment Group, University of California, Santa Cruz, California.

Shiple, W. F.

- 1978 Native Languages of California. In, *Handbook of North American Indians*, edited by W. Sturtevant, Volume 8 (California), pp. 80-90. Smithsonian Institution, Washington, D.C.

Stafford, J.

- 1973 Site record for CA-SCR-4 (P-44-000012). On file at the Northwest Information Center, California State University, Sonoma, Rohnert Park, California.

Stafford, D., and J. Stafford

- 1976a Site record for CA-SCR-142 (P-44-000145). On file at the Northwest Information Center, California State University, Sonoma, Rohnert Park, California.
- 1976b Site record for CA-SCR-143 (P-44-000146). On file at the Northwest Information Center, California State University, Sonoma, Rohnert Park, California.

State of California

- 1976 *California Inventory of Historic Resources*. On file at the Northwest Information Center, California State University, Sonoma, Rohnert Park, California.
- 1992 California Points of Historical Interest listing. On file at the Northwest Information Center, California State University, Sonoma, Rohnert Park, California.

Stephens, T.

- 2019 UCSC's Genomics Institute settles into new Delaware Avenue headquarters. 09/03/2019 article on UC Santa Cruz News Center website, <https://news.ucsc.edu/2019/09/genomics-institute.html>, accessed May 2020.

Taylor, J.

- 2009 Antonelli Brothers. The Begonia in California, Part I. Pacific Horticulture Society, in April 2009 issue of *Pacific Horticulture*. Digital document,

<https://www.pacifichorticulture.org/articles/the-begonia-in-california-part-1/>,
accessed May 2020.

Toenjes, J.

1973 Site record for CA-SCR-198H (P-44-000200). On file at the Northwest Information Center, California State University, Sonoma, Rohnert Park, California.

1978a Site record for CA-SCR-181 (P-44-000183). On file at the Northwest Information Center, California State University, Sonoma, Rohnert Park, California.

1978b Site record for CA-SCR-184H (P-44-000186). On file at the Northwest Information Center, California State University, Sonoma, Rohnert Park, California.

Tunheim, D.

1975 *Mission Hill Area Historic District National Register Nomination Form*. On file, Northwest Information Center, California State University, Sonoma, Rohnert Park, California.

University of California (U.C.) Office of Planning and Research

2020 Notice of Preparation, Environmental Impact Report for the U. C. Santa Cruz 2040 Long Range Development Plan. Draft, February 2020. On file Physical Planning, Development and Operations, University of California, Santa Cruz, California.

University of California, Santa Cruz Arboretum (UCSC Arboretum)

2020 Arboretum & Botanical Gardens, A Brief History. Digital document, <https://arboretum.ucsc.edu/history/index.html>, accessed May 2020.

Unknown

N.d. (Post-1992) Site Record for CA-SCR-182 (P-44-000184). On file at the Northwest Information Center, California State University, Sonoma, Rohnert Park, California.

Whaley, D.

2014 Moore Creek Trestles. May 30, 2014 blog, on the Santa Cruz Trains website, digital document, <https://www.santacruztrains.com/2014/05/>, accessed May 2020.

Williams, E.

1890 Narrative of a Mission Indian. In, *The History of Santa Cruz County, California*. E.S. Harrison, ed., pp. 45-48. Pacific Press, San Francisco, California.

Appendix A

Maps

Archaeological and traditional property locations are considered confidential and should not be disclosed to the general public or unauthorized persons. This document contains sensitive information regarding the nature and location of archaeological sites. Public access to information regarding the location, character, or ownership of a cultural or heritage resource is restricted by law per Section 304 of the National Historic Preservation Act; Section 9(a) of the Archaeological Resources Protection Act; Executive Order 13007; and is exempt from the California Public Records Act under Government Code Section 6254.10.

Appendix B

Cultural Resources and Isolates Recorded on the UC Santa Cruz Campus

Archaeological and traditional property locations are considered confidential and should not be disclosed to the general public or unauthorized persons. This document contains sensitive information regarding the nature and location of archaeological sites. Public access to information regarding the location, character, or ownership of a cultural or heritage resource is restricted by law per Section 304 of the National Historic Preservation Act; Section 9(a) of the Archaeological Resources Protection Act; Executive Order 13007; and is exempt from the California Public Records Act under Government Code Section 6254.10.

APPENDIX C.

Summary of Cultural Resource Literature

Appendix C. Summary of Cultural Resource Literature

Study No.	Date	Author(s)	Title	Sites	Study Type
N/A	00/67	Dong and Calciano	John Dong: The Cowell Ranch Cookhouse, an Interview Conducted by Elizabeth Spedding Calciano	N/A	Primary source interview
S-003797	03/74	R. Edwards, A. Lonnberg	A Preliminary Evaluation of an Archaeological and Historical Resources of the Quarry Settlement Development	CA-SCR-94	Survey; general
S-003810	09/74	M. H. Heicksen	An Evaluation of Archaeological Site SCR-94 (Santa Cruz County) Part A	CA-SCR-94	Excavation and Field Study
S-003810 a	00/74	M. H. Heicksen	A Report and Archaeological Evaluation of a Prehistoric Cultural Resource, CA-Scr-94 Part B	CA-SCR-94	Excavation
S-003817	00/74	M. H. Heicksen	Archaeological Field Reconnaissance of a Portion of the West Campus Unit, S.H. Cowell Foundation Lands	None	Field Study
S-011356	10/74	M. H. Heicksen	Historical Resources of the Quarry Settlement Development	P CA-SCR-94	Field Study
S-003912	10/77	S. A. Dietz	An Archaeological Reconnaissance of the Approximately 9.7 acre Allen Property at 350 Meder Street in the City of Santa Cruz, California (letter report)	None	Field Study
S-003920	10/77	R. Edwards, M. R. Farley, R. Cartier	Archaeological Evaluation of Selected Areas on the Campus of the University of California, Santa Cruz	CA-SCR-160, CA-SCR-3 (42A), CA-SCR-4 (42B), CA-SCR-142, CA-SCR-143, ranch gate/fence lines, Red Hill Rd.	Survey; controlled intuitive
S-003957	11/78	R. Edwards, P. Podzorski, J. Pryor, J. Toenjjes	A Preliminary Archaeological Reconnaissance of the Lands of the University of California at Santa Cruz	CA-SCR-3 (42A), CA-SCR-4 (42B), CA-SCR-94, CA-SCR-180, CA-SCR-181, CA-SCR-182H, CA-SCR-183H, CA-SCR-184H, CA-SCR-185H, CA-SCR-186H, CA-SCR-198H	Survey; Various Intensities
S-004001	05/79	R. Edwards	Intensive Surface Survey to Determine the Boundaries of Archaeological Site CA-SCR-94, University of California, Santa Cruz	CA-SCR-94	Survey; intensive
None/Not Available	08/79	R. Edwards	Archaeological Resource Section of an Intensive Study of Faculty Housing Apartments	CA-SCR-94	Evaluation
S-004055	12/79	M. F. Fox	An Analysis of the Chipped Stone Assemblage from SCR-94	N/A	Excavation, Field Study
S-004055 a	12/79	M. F. Fox	Edge Unit Analysis of the Lithic Assemblage from CA-SCR-94, Santa Cruz, California	N/A	Excavation, Field Study
None/Not Available	10/79	R. Edwards, G. Breschini, T. Haversat, M. Fazio-Fox	Archaeological Evaluation of SCR-94 for the Proposed Faculty Housing Apartments Environmental Impact Report University of California Santa Cruz	CA-SCR-94	Testing, Evaluation
None/Not Available	03/83	R. Edwards, J. M. Cooper, T. Jones	Cultural Resource Evaluation of Several Possible Areas for a Proposed Research and Development Park and Housing, U.C.S.C. Santa Cruz County, California	CA-SCR-277H CA-SCR-262H, CA-SCR-3 (42A), CA-SCR-4 (42B)	Survey, Intensive

Study No.	Date	Author(s)	Title	Sites	Study Type
				Red Hill Rd., Chinquapin Rd.	
S-006956 a	08/84	M. Ryan	Potential Subsurface Historical Resources, Faculty Housing Area/SCR-94 and SCR-198H, Continuing Investigations, University of California Campus, Santa Cruz, California	CA-SCR-198H	Architectural/historical, Management/planning, Other research
S-006956	10/84	R. Edwards, C. Simpson-Smith	Cultural Resources Evaluation of the Faculty For-Sale Housing	CA-SCR-198H	Field Study, Evaluation
S-006956 b	11/84	R. Edwards, C. Simpson-Smith	Phase Two: Surface Reconnaissance and Subsurface Testing for the Faculty For-Sale Housing Project	CA-SCR-198H	Survey, intensive; Testing
S-009388	03/85	R. Edwards	A Preliminary Archaeological Reconnaissance of a Site Proposed for a Fifty Unit Student Housing Project at the University of California, Santa Cruz	None	Survey, general
S-006956 c	07/85	R. Edwards	Faculty For-Sale Housing Project, 7-97330	CA-SCR-94, CA-SCR-198H	Monitoring report
S-006956 d	07/85	A. Black	Field Notes of Archaeological Check of UCSC Faculty Apartment, Phase B Construction	None	Field Study
None/Not Available	11/86	R. Edwards, E. Kimbro	Mission Fields in the Great Meadow, University of California, Santa Cruz	CA-SCR-277H	Archival research, Testing
S-008884	12/86	R. Edwards	UCSC Long Range Development Plan, Review of Cultural Resources	CA-SCR-160, CA-SCR-262H, CA-SCR-182H, CA-SCR-183H, CA-SCR-184H, CA-SCR-185H, CA-SCR-186H, CA-SCR-181, CA-SCR-277H, CA-SCR-198H	Review
S-010545	06/88	R. Edwards, C. Simpson-Smith	Surface Survey and Subsurface Testing of CA-SCR-160, University of California Santa Cruz, California	CA-SCR-160	Survey, Testing
S-013385	08/89	R. Edwards, C. Simpson-Smith	Brief Report of Site Preparation Activities at CA-SCR-160 at the University of California Santa Cruz	CA-SCR-160	Field Study, Testing
S-012109	10/89	R. Edwards, C. Simpson-Smith	Preliminary Archaeological Reconnaissance and Historical Archival Research for the Proposed Parking Development at Campus Facilities, University of California, Santa Cruz	CA-SCR-198H	Survey, Archival research
None/Not Available	12/89	R. Edwards, C. Simpson-Smith	Preliminary Report on the pH Sampling at CA-SCR-160, University of California at Santa Cruz	CA-SCR-160	Testing
None/Not Available	04/90	R. Edwards	Colleges 9 and 10 letter review	CA-SCR-160	Review
S-012109	09/90	R. Edwards, C. Simpson-Smith	Preliminary Archaeological Reconnaissance of the Empire Grade Proposed Shoulder Widening, Santa Cruz County, California	CA-SCR-142 (Revised site boundary)	Survey, Site record update
S-013773 b	01/91	R. Z. Melnick, T. Keller	Review and Evaluation of Potential Impact of Proposed Development of Inclusion Area 'D' on Potential Historic Landscape Resources, University of California, Santa Cruz Campus	None	Literature Search
None/Not Available	04/91	R. Edwards, C. Simpson-Smith, D. Huelsbeck,	Archaeological Excavations at CA-SCR-160, University of California Santa Cruz, California	CA-SCR-160 (Revised site boundary)	Testing

Study No.	Date	Author(s)	Title	Sites	Study Type
		M. Macko			
S-013773 c	08/91	R. Edwards, C. Simpson-Smith	Research Evaluation and Initial Field Reconnaissance of the Historical Resources of Proposed Development of the UCSC Inclusion Area 'D'	None	Field Study
S-013773 d	09/91	R. Edwards, C. Simpson-Smith	Research Evaluation and Initial Field Reconnaissance of the Historical Resources and Recommendations for the Proposed Development of Inclusion Area 'D' and Alternate Access Routes	Adjacent to CA-SCR-198H	Survey, Review
None/Not Available	11/91	R. Edwards	Archaeological Sites on Marshall Field, CA-SCR-3 and -4. Letter report	CA-SCR-3 (42A), CA-SCR-4 (42B), Marshall Rd., Chinguapin Rd.	Survey by Cabrillo College class.
S-013773 a	03/92	R. Edwards, E. Kimbro, R. Melnick	Final Report, Potential Impact to Cultural Resources, Proposed Development of Inclusion Area "D", Campus of the University of California Santa Cruz	Adjacent to CA-SCR-198H	Review, evaluation based on 09/91 report.
S-015955	09/92	P. Rodrigues, G. Sanchez, S. Dietz	Historic Cowell Ranch Cultural Landscape Report	CA-SCR-198H, Identifies possible features.	Survey, intensive
S-014785	04/93	S. Ziegler	Archaeological and Historical Resources Survey and Impact Assessment, Smith Grade North THP, 1-93-220-SCR, (California Department of Forestry)	None	CF MOU
None/Not Available	10/93	J. Costello, Amaglio	Significance Assessment: Historic Object in Upper Quarry, Knob Removal, UC Santa Cruz, California	Upper Quarry	Feature assessment
None/Not Available	1994	R. W. Piwarzyk	The Lime Kilns of the Pogonip	Lime Kiln features	Survey
S-015899	04/94	R. Edwards, C. Simpson-Smith	UCSC Granary/Child Care Project on a Portion of CA-SCR-198H, Historic Lime Operation, Henry Cowell Ranch, Santa Cruz, California	CA-SCR-198H	Monitoring
None/Not Available?	06/94	R. Edwards	UCSC Hagar Drive Bicycle and Pedestrian Improvements: Review of Historic and Prehistoric Resources	CA-SCR-277H (Mission Field)	Review
S-028717	06/94	S. Ziegler	Archaeological and Historical Resources Survey and Impact Assessment, A Supplemental report for a Timber Harvesting Plan, Empire Grade THP, Project # 1-94-392 (California Department of Forestry)	CA-SCR-180	CF MOU
None/Not Available	10/94	G. Wolff	Faculty Housing Addition	CA-SCR-94	Review
None/Not Available	08/95	D. Rosen	Cardiff House Paint Project: Background Information	CA-SCR-198H, Cardiff House	Review
S-017590	09/95	C. Simpson-Smith, R. Edwards	Archaeological Monitoring for the Barn Theater: ADA and Path Project at University of California, Santa Cruz	CA-SCR-198H, 2 trash features, 2 foundation stones	Monitoring
S-017591	11/95	R. Edwards	Stonehouse Lot 118 Resurfacing (letter report)	CA-SCR-198H	Field Study
S-018679	05/96	R, Edwards	Stores Fire Sprinkler Trench Monitoring, University of California at Santa Cruz, Project Authorization No.: ARC 015	None	Monitoring
S-018677	05/96	C. Simpson-Smith, R. Edwards	Archaeological Monitoring for the Blacksmith 's Shop: ADA Improvements at the University of California, Santa Cruz	CA-SCR-198H, 1 trash feature, 1 wood platform	Monitoring

Study No.	Date	Author(s)	Title	Sites	Study Type
None/Not Available	09/97	S. Wee, JRP Historical Consulting Services	Historic Resources on the Historic Cowell Ranch	CA-SCR-198H	Review of Architecture
None/Not Available	11/97	C. Aldecoa, Environmental Assessment Group	Historic Property Survey Report/ Finding of Effect for the Proposed Improvements to Intersection of Coolidge Drive and Campus Facilities Access Road University of California Santa Cruz	CA-SCR-198H (Proposed change in site boundary to exclude corporation yard)	Survey
None/Not Available	2/98	Brady/LSA	Draft Pogonip Master Plan Environmental Impact Report	7 historic properties and features	Research /Master Plan
None/Not Available	11/98	C. Morgan, T. Jackson	Archaeological Monitoring of the Central Garage, Removal of Underground Fuel Tanks	CA-SCR-198H, 2 redwood posts	Monitoring
None/Not Available	12/98	C. Morgan, T. Jackson	Archaeological Monitoring for the Coolidge Drive/CAMFAC Intersection Improvements, University of California Santa Cruz, Santa Cruz County, CA.	CA-SCR-198H, Limestone, ash and trash feature	Monitoring
None/Not Available	1999 ?	T. Jackson	Draft letter: Installation of Temporary Office Trailers, University of California, Santa Cruz	None	Review
None/Not Available	01/00	T. Jackson	Modular Housing Relocation Project	CA-SCR-182H, Unrecorded Lower Quarry	Review
S-023014	05/00	B. Beck	CDF Project Review Report for Archaeological and Historical Resources, Marshall Field 2000, Project #RXCZU015 (California Department of Forestry)	P-44-000456	CF MOU
None/Not Available?	05/00	C. Aldecoa, Environmental Assessment Group	Central Garage Addition letter report to State Historic Preservation Officer	Adjacent to CA-SCR-198H	Review
None/Not Available	06/00	T. Jackson	Jordan Gulch Drainage Remediation Project	CA-SCR-182H, Unrecorded pocket quarry	Survey
None/Not Available	01/01	T. Jackson	Cultural Resources Survey for College Infill Apartments Project	None; Adjacent to CA-SCR-182H	Survey
None/Not Available	02/01	ARG	Cowell Ranch Revised Draft Historic District Management Plan/ Treatment Guidelines University of California, Santa Cruz, Santa Cruz, California	CA-SCR-198H, CA-SCR-182H	Review
None/Not Available	02/01	ARG	Cowell Ranch Revised Draft Historic District Evaluation University of California, Santa Cruz, Santa Cruz, California	CA-SCR-198H, CA--182H (lower section is district contributor)	Draft Evaluation
None/Not Available	11/01	T. Jackson	Archaeological Reconnaissance for Proposed Engineering Building	None	Survey
None/Not Available	12/01	T. Jackson	Archaeological Reconnaissance for Proposed Butler Building between UCSC Power Plant and McLaughlin Drive	None	Survey
None/Not Available	06/02	ARG	Cowell Ranch Revised Draft Historic District Evaluation University of California, Santa Cruz, Santa Cruz, California	CA-SCR-198H, CA-SCR-182H (lower section is district contributor, but no longer within district boundary)	Draft Evaluation
None/Not Available	03/03	T. Jackson	Cultural Resources Inventory for the Proposed Humanities and Social Sciences Facility, University of California at Santa Cruz	None	Survey

Study No.	Date	Author(s)	Title	Sites	Study Type
None/Not Available	04/03	D. Eselius	UCSC Proposed Humanities and Social Sciences Facility EIR Assessment (letter report)	Historic kilns, Cowell Home Ranch	EIR Review
None/Not Available	09/03	T. Jackson	Emergency Response Center Project Adjacent to National Register-Eligible Cowell Ranch District	Adjacent to CA-SCR-198H in facilities area	Review
None/Not Available	01/04	T. Jackson	Cultural Resources Inventory, McHenry Library Addition and Renovation Project, UCSC	None	Survey
None/Not Available	07/04	Jones & Stokes	Draft Cultural Resources Inventory Report for the UC Santa Cruz Ranch View Terrace Project, South UCSC Campus, Santa Cruz County, California	None	Survey
None/Not Available	12/04	T. Jackson	Cultural Resources Inventory Digital Arts Facility Project, UCSC (letter report)	CA-SCR-182H (no new resources)	Inventory
None/Not Available	09/05	Kennedy/ Jenks Consultants	Stormwater and Drainage Master Plan	None	Master Plan
None/Not Available	03/05	E. Reese, T. Jackson	(In progress) Survey report for Family Student Housing.	Adjacent to CA-SCR-142	Survey, intensive
None/Not Available	05/05	E. Reese	Preliminary Cultural Resources Inventory, University of California, Santa Cruz	7 historic features, 1 prehistoric iso, 8 previously recorded sites	Survey
None/Not Available	06/05	E. Reese and T. Jackson	Cultural Resource Evaluation of the University of California, Santa Cruz Infrastructure Improvement Project	CA-SCR-142, CA-SCR-181, CA-SCR-182H, CA-SCR-183, CA-SCR-186	Survey
None/Not Available	07/05	URS/UC Santa Cruz	University of California, Santa Cruz Long-Range Development Plan	N/A	Development Plan
None/Not Available	07/05	E. Reese, T. Jackson, M. Elliott	University of California, Santa Cruz, Infrastructure Improvement Project, Santa Cruz, California	CA-SCR-181, CA-SCR-182H, CA-SCR-183H, CA-SCR-186H	Survey
S-036239	11/05	E. Reese	Cultural Resources Inventory, UCSC (letter report)	4 quarries and CA-SCR-182H	Inventory Summary
None/Not Available	02/06	Architectural Resource Group and Pacific Legacy	Getty Foundation Campus Heritage Grant, 2004, University of California, Santa Cruz	Cowell Ranch and Lime Industry Historic District	Project Overview and Evaluations
None/Not Available	01/07	E. Reese, P. Welsh, T. Jackson	Data Recovery Results for The Ranch View Terrace Project at the University of California at Santa Cruz, Santa Cruz County, California	CA-SCR-198H	Excavation
S-034280	03/07	S. S. Morgan	An Archaeological Survey Report for the UC Santa Cruz Timber Harvest Plan, Santa Cruz, County, California, THP # 1-07-062 SCR	CA-SCR-182H, P CA-SCR-183H	Field Study
S-034292	08/07	W. H. Bonner, J. M. Keasling	Cultural Resources Records Search Results and Site Visit for T-Mobile Wireless Candidate SF15031 (UCSC Monopole), 1156 High Street, Santa Cruz, Santa Cruz County, California (letter report)	None	Field Study
S-033875	08/07	J. C. Whatford	Archaeological Survey Report, Wilder Ranch and Marshall Field 2007 VMP, RX North-028 CZU	CA-SCR-3, CA-SCR-4, P-44-000456	Field Study
S-035233	07/08	L. Billat	New Tower ("NT") Submission Packet, FCC Form 620, Project Name: DAS Next G UCSC - The Village, Project Number: SF-11070A	None	Field Study
S-036238	04/09	E. Reese	(Arboretum) Monitoring Report and Evaluation of Historical Refuse at CA-	CA-SCR-359H	

Study No.	Date	Author(s)	Title	Sites	Study Type
			SCR-359H, the City of Santa Cruz Reservoir Site, Santa Cruz		
S-036784	05/09	W. H. Bonner, K. A. Crawford	Cultural Resources Records Search and Site Visit Results for NextG Networks, Inc. Candidate CN 3792 (UCSC Pole), Hager Drive (South), U.C.S.C. Campus, Santa Cruz, Santa Cruz County, California (letter report)	None	
S-036242	05/09	E. Reese	Data Recovery Program Report for the Blacksmith Shop Feature, CA-SCR-198H, University of California, Santa Cruz, Santa Cruz County, California	CA-SCR-198H	Excavation
S-044307	05/12	A. Travers	Archaeological Sensitivity Assessment CNU3474/ 1156 High Street, 1156 High Street, Santa Cruz, Santa Cruz County, CA, EBI Project #6113030 (letter report)	None	Field Study
S-039111	12/11	S. S. Morgan	An Archaeological Survey Report for the UC Santa Cruz Co-Gen Timber Harvest Plan/Timberland Conversion Permit, Santa Cruz County, California	CA-SCR-160, CA-SCR-182H, CA-SCR-183H, CA-SCR-360H, CA-SCR-361H	Architectural/ Historical Field Study
44-000184	02/12	P. Paramoure	Infrastructure Phase 2 Storm Water Improvements - Excavation, Trenching, and Grading Archaeological Monitoring Report, UCSC Santa Cruz County, California	None	Monitoring
S-039232	06/12	E. Reese	Archaeological Monitoring for the Barn H Loading Dock Project Excavations at the University of California, Santa Cruz	None	Monitoring
S-046358	09/12	P. Paramoure	UCSC Archaeological Resources Study, Telecommunications Infrastructure Improvements Phase A Project, Santa Cruz County, California - (letter report)	CA-SCR-359H	Field Study
S-046383	10/12	P Paramoure	Campus Corporation yard Fleet Vehicle Wash - Trenching, and Excavation Monitoring Report, Santa Cruz County, California	None	Excavation, Monitoring
S-040046	01/13	C. B. Vaughan	An Archaeological Survey Report for the UC Santa Cruz Merrill Timber Harvest Plan/Timberland Conversion Permit, Santa Cruz County, California	None	CF MOU
S-042680	04/13	C. Losee	Collocation ("CO") Submission Packet FCC Form 621 for Stevenson College - 101 McLaughlin Drive, University of California, Santa Cruz	P-44-000741	Field Study
S-042681	04/13	C. Losee	Collocation ("CO") Submission Packet FCC Form 621 for Campus Fleet Garage and TSM Office Antenna Replacement - Coolidge Drive, University of California, Santa Cruz	None	Evaluation, Field Study
S-045506	09/13	M. Kaye and S. Dexter	University of California at Santa Cruz Physical Planning and Construction Archaeological Survey Report: Historic Cowell Ranch Hay Barn Reconstruction Project	None	Survey

Study No.	Date	Author(s)	Title	Sites	Study Type
S-046387	00/14	P. Paramoure	An Archaeological Survey of the Northern Portion of the Lower Quarry Field, University of Santa Cruz, Santa Cruz County, California	None	Field Study
S-046385	00/14	P. Paramoure, J. Schlagheck	An Archaeological Investigation of a Historic Stone Foundation Site for Proposed New Recycling Yard, University of California, Santa Cruz, Santa Cruz County, California	None	Excavation, Field Study
S-046384	01/14	P. Paramoure	Campus Corporation Yard CNG Stanchion Project Archaeological Monitoring Report (letter report)	None	Monitoring
None/Not Available	02/14	P. Paramoure	Patricia Paramoure Archaeological Consulting Infrastructure Phase 2 Storm Water Improvements – Excavation, Trenching, and Grading Archaeological Monitoring Report	Possible Cowell Ranch fence remnant and historic isolates	Monitoring
S-046361	04/14	P. Paramoure	Archaeological Monitoring and Artifact Analysis, Hay Barn Renovation Project at the Cowell Lime Works Historical District, University of California, Santa Cruz	None	Monitoring
S-046289	05/14	P. Paramoure	Telecommunications Infrastructure Improvements Phase A Archaeological Monitoring Report	None	Monitoring
S-046361	08/14	P. Paramoure, J. Schlagheck	Archaeological Monitoring and Subsurface Reconnaissance of the Historic Hay Barn Site, University of California, Santa Cruz, Santa Cruz County, California	None	Excavation, Monitoring
S-046377	10/14	P. Paramoure, C. Mikulik	UCSC infrastructure Phase 2 Storm Water Improvements, Jordan Gulch Main Stem Project, Archaeological Monitoring Report, Santa Cruz County, California	CA-SCR-182H	Excavation, Monitoring
S-048801	11/15	P. Paramoure	University of California at Santa Cruz Student Life Seismic Corrections Phase 2A-Cardiff House Project Archaeological Monitoring Report	A large number of scattered historic artifacts were observed and collected.	Monitoring
S-047398	02/16	S. Dexter and M. Fitzgerald	University of California at Santa Cruz Physical Planning and Construction Archaeological Survey Report: New Environmental Health & Safety Facility Project	CA-SCR-424H road segment	Survey
S-046361 a	04/16	P. Paramoure	Archaeological Monitoring and Artifact Analysis, Hay Barn Renovation Project at the Cowell Lime Works Historical District, University of California, Santa Cruz	None	Monitoring
None/Not Available	06/16	L. Holm	3149-01 University of California, Santa Cruz West Campus Housing Study Area, Santa Cruz County, California (letter report)	None	Survey
S-048231	08/16	Brady, R.	Cultural Resources Inventory for the UCSC Modular Student Housing Project - Santa Cruz County, CA (letter report)	CA-SCR-182H, CA-SCR-185H, P-44-000741, P-44-000855	Field Study
S-046385 a	12/16	P. Paramoure	University of California at Santa Cruz New Recycling Yard Project Archaeological Monitoring Report	None	Evaluation, Field Study, Monitoring

Study No.	Date	Author(s)	Title	Sites	Study Type
S-049040	01/17	C. B. Vaughan, S. D. Dexter, M. K. Fitzgerald	CAA Adendum for UC Santa Cruz EH&S THP/TCP Santa Cruz, California	CA-SCR-424H	Field Study
S-049916	04/17	D. Brunzell	Cultural Resources Assessment for the Santa Cruz Crown Castle DAS Project, Santa Cruz, Santa Cruz County, California (BCR Consulting Project No. SYN1609) (letter report)	None	Field Study
S-051929	08/18	H. Haas, B. Vargas	Archaeological Resources Survey Update for the Kresge College Project (letter report)	None	Field Study
None/Not Available	10/18	Architecture & History, LLC, Knapp Architects, and Watson Heritage Consulting	University of California, Santa Cruz, Kresge College Historic Resource Evaluation	Kresge College structures	Evaluation
None/Not Available	03/19	R. Brady	Cultural Resources Assessment for the UCSC Great Meadow Bike Path (letter report)	CA-SCR-182H, CA- SCR-198H, CA- SCR-277H, P-44- 000855 (Cowell Home Ranch District), P-44- 000958, P-44- 001027	Survey

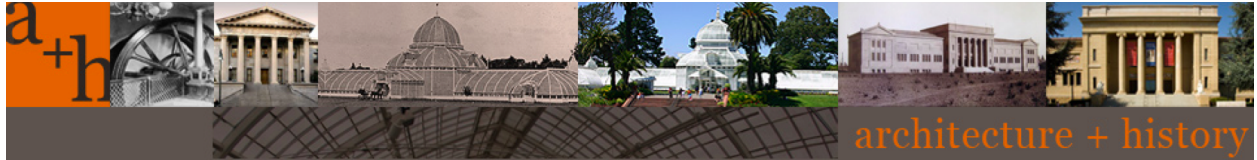
APPENDIX D.

Native American Contact

Appendix D. Native American Contact Log

UCSC LRDP 2020 (PL 3593-01)					Pacific Legacy Representative: Shanna Streich
Organization	Contact	Letter Sent	Phone	E-mail	Comments
Native American Heritage Commission (NAHC)	Sarah Fonseca, Cultural Resources Analyst	03/27/2020 (UC Main Campus)	(916) 373-3710	nahc@nahc.gov	Sacred Lands Files search request for campus-centered area. Response received via email, stating Positive results, on 04/01/2020.
		05/11/2020 (Delaware Street)			Sacred Lands File search request for 2300 Delaware Ave. Response received stating Positive results, on 05/13/2020.
Amah Mutsun Tribal Band	Valentin Lopez, Chairperson	05/13/2020	(916) 743-5833	vlopez@amahmutsun.org	Letter emailed. Email response received on 05/14/20 requesting further discussion of project.
Amah Mutsun Tribal Band of San Juan Bautista	Irenne Zwierlein, Chairperson	05/13/2020	(650) 851 - 7489	amahmutsuntribal@gmail.com	Letter emailed. Email response received on 05/14/20; Ms. Zwierlein expressed concern that NWIC should be consulted for previous sites.
Costanoan Ohlone Rumsen-Mutsun Tribe	Patrick Orozco, Chairman	05/13/2020	(831) 728 - 8471	yanapvoic97@gmail.com	Letter emailed.
Indian Canyon Mutsun Band of Costanoan	Ann Marie Sayers, Chairperson	05/13/2020	(831) 637 - 4238	ams@indiancanyon.org	Letter emailed.
Muwekma Ohlone Indian Tribe of SF Bay Area	Monica Arellano	05/13/2020	(408) 205 - 9714	marellano@muwekma.org	Letter emailed.

Appendix E2 - Historic Resources Report



**UC Santa Cruz
2020 Long Range Development Plan Historic Resources Technical Memorandum**

**completed for:
ascent environmental, inc.
sacramento, ca**

**submitted by:
architecture + history, llc
in association with watson heritage consulting
san francisco, ca
415 760 4318**

december 2020

Table of Contents

Introduction	2
Purpose	2
Methodology	2
Overview of Previous Historic Resources Studies at UCSC	3
2004 Getty Foundation Campus Heritage Grant Historic Context Statement and Survey	3
Table 1 - UCSC Campus Core Historic District Potential Contributors	4
Table 2 - UCSC Campus Core Historic District Properties Needing More Research	7
Cowell Lime Works National Register Historic District	7
Table 3 - Cowell Lime Works National Register Historic District Contributors	7
Table 4 - Cowell Lime Works National Register Historic District Non-Contributors	8
Kresge College Historic District Evaluation	8
2020 Reconnaissance-Level Survey	9
Table 5 - 2020 Reconnaissance Survey, Arranged by Campus Region	9
Campus Core	9
Main Entrance	9
West Side	10
UCSC Farm and Garden	10
Summary Observations About Historic Resources on the UCSC Campus	11
Potential UCSC Campus Core Historic District	11
Kresge College	11
Center for Agroecology & Sustainable Food Systems (Farm), Alan Chadwick Garden, and Arboretum	11
Oakes College	12
Works Cited	13
Appendices	14
Appendix A: 2020 Reconnaissance-Level Survey Building Sheets	15
Appendix B: UCSC Campus Building Database	33

I. Introduction

Purpose

The purpose of this Technical Memorandum is to inform the Environmental Impact Report (EIR) for the 2020 Long Range Development Plan (LRDP) for the University of California, Santa Cruz (UCSC). This report has been compiled jointly by architecture + history, llc, and Watson Heritage Consulting (the consultant team). This effort focuses on historic architectural and built resources, a separate study focusing on archaeological and cultural resources has been undertaken by Pacific Legacy, Inc. This technical memorandum identifies previously evaluated and designated historic resources within the UCSC campus environment and provides general information on potential historic resources within the campus boundary.

Methodology

In March and May 2020, the consultant team conducted a reconnaissance-level survey of properties on the University of California, Santa Cruz campus that were built before 1980 and had not been documented previously in any historic resource assessments. Buildings constructed before 1980 would be 50 years of age in 2030 and thus may become age eligible for both the National Register of Historic Places (NRHP) and the California Register of Historical Resources (CRHR) by that time.

The consultant team conducted both primary and secondary research to inform the evaluation. This included reviewing the Long Range Development Plans prepared for UCSC in 1963, 1971, 1978, 1988, and 2005, as well as the 2005 EIR for the LRDP. The consultant team reviewed an intensive-level survey of the UCSC campus core completed in 2005 by Architectural Resources Group (ARG), prepared by two members of the current consultant team, Bridget Maley and Shayne Watson. The UCSC Physical & Environmental Planning Services department provided building databases and maps that aided in the development of a database prepared for this report. That database, which includes every building on the UCSC campus, presents construction date; architect, builder, engineer, and landscape architect; and information regarding whether or not the building was included in previous or current historic resources surveys. The database is attached as Appendix B of this report. Preliminary data sheets for buildings not previously inventoried were completed for buildings and complexes that pre-date 1980 and are included in Appendix A of this report. One property constructed in 1980, the Westside Research Park at 2300 Delaware Avenue, a site owned by UCSC, is included in the LRDP plan area. A data sheet was completed for this off-campus site for informational purposes.

II. Overview of Previous Historic Resources Studies at UCSC

2004 Getty Foundation Campus Heritage Grant Historic Context Statement and Survey

As part of a Getty Campus Heritage Grant awarded to UCSC in 2004, San Francisco-based consulting firm ARG evaluated the historical significance and integrity of the campus core of UCSC using the criteria of both the National Register of Historic Places (NRHP) and the California Register of Historical Resources (CRHR). All buildings surveyed were recorded on State of California Department of Parks and Recreation Series 523 forms (DPR forms). The survey was based on historical background and guidance developed in the *Campus Core Historic Context Statement*, prepared for UCSC by ARG in 2006.

ARG concluded in the Getty Grant survey that a majority of the original UCSC campus core, including the first six colleges, and a number of other campus buildings, are significant at the national level as a potential historic district under NRHP Criterion C/CRHR Criterion 3, as a collection of

buildings that are associated with master architects of the Modern movement of architecture. The buildings represent an exceptional example of their type, period, and method of construction and are emblematic of an era and still possess high artistic values associated with the Bay Region Modernism movement.¹

ARG identified the period of significance for the potential Campus Core historic district as 1964, when construction began on the UCSC campus, to 1973, the year the last prominent architect designed a residential college (Kresge College, designed by Charles Moore of Moore and Turnbull).²

It is important to note that at the time of the 2005 survey, the earliest buildings on the UCSC campus--completed in 1965--were only 40 years in age and did not meet the 50-year threshold required for buildings eligible for the NRHP. As such, UCSC campus buildings were identified as having the potential to contribute to a UCSC campus core historic district when they reached 50 years in age. According to ARG,

[I]t is highly likely that when the buildings associated with the initial campus building campaign reach 50 years of age, or even before under an exceptional significance consideration, they would be strong candidates for historic designation, possibly at the highest level, National Historic Landmark, and certainly as a historic district under both the National and California Registers.³

¹ Architectural Resources Group, *Campus Core Historic Context Statement* (February 2006), 13.

² *Ibid.*, 13.

³ *Ibid.*

UC Santa Cruz, Long Range Development Plan, Historic Resources Technical Memorandum

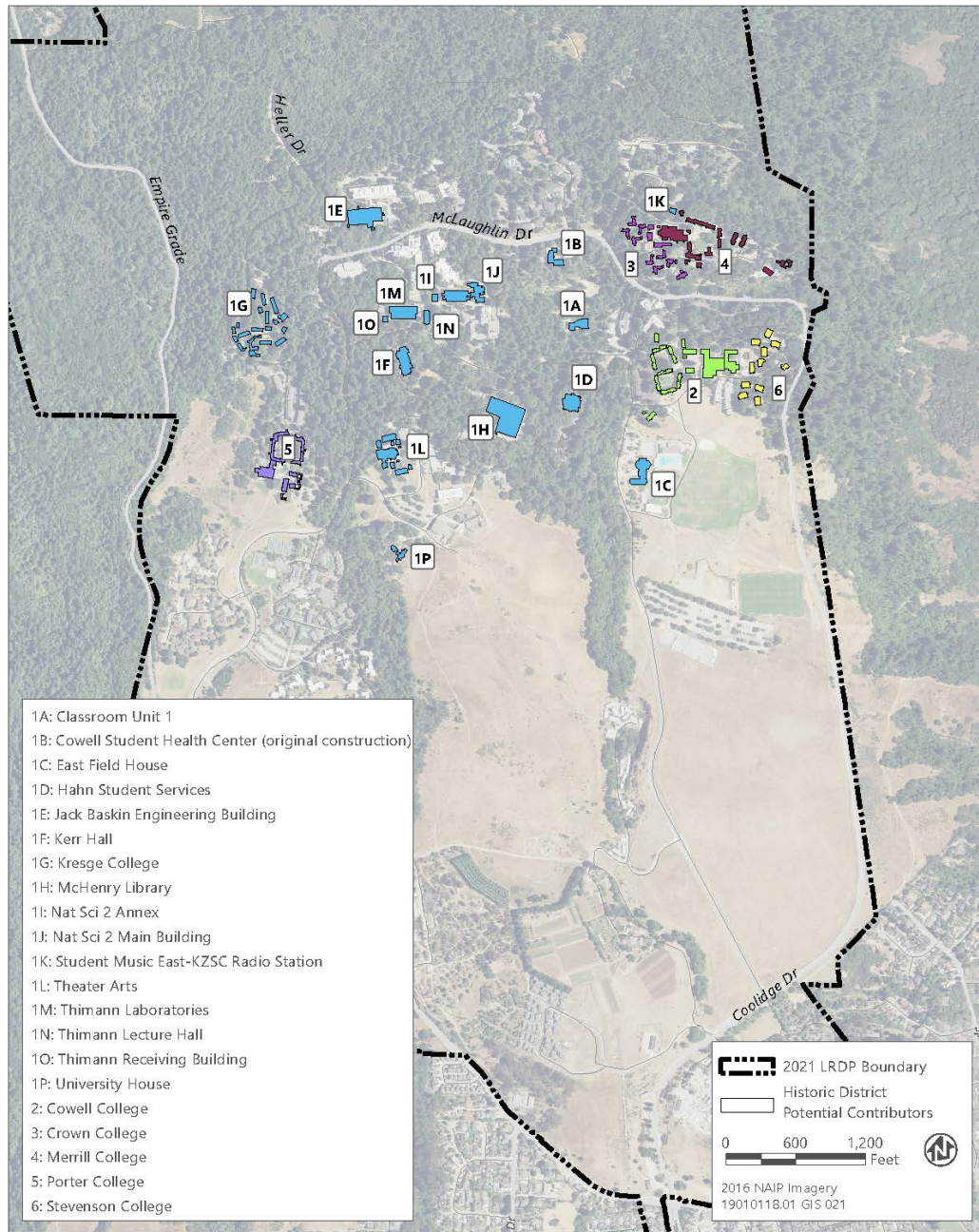
The 2005 survey identified the following buildings as potential contributors to an identified UCSC campus core historic district:

Table 1 - UCSC Campus Core Historic District Potential Contributors

Building Name	Construction Year	Architect
Classroom Unit 1	1972	Marquis & Stoller
Cowell College	1966	Wurster, Bernardi & Emmons
Cowell Student Health Center (original construction)	1970	John Funk
Crown College	1967	Ernest J. Kump & Associates
East Field House	1965	Callister, Payne & Rosse
Hahn Student Services	1965	Ernest J. Kump
Jack Baskin Engineering Building	1971	Reid & Tarics
Kerr Hall	1973	Germano Milano & Associates
Kresge College	1973	MLTW Moore - Turnbull
McHenry Library	1966	John Carl Warnecke & Assoc.
Merrill College	1968-1971	Campbell & Wong & Associates
Nat Sci 2 Annex	1969	Anshen & Allen
Nat Sci 2 Main Building	1969	Anshen & Allen
Porter College	1971-1973	Hugh Stubbins & Associates
Stevenson College	1966-1968	Joseph Esherick & Assoc.
Student Music East-KZSC Radio Station	1967	UCSC staff
Theater Arts	1971	Ralph Rapson & Associates
Thimann Laboratories	1965	Anshen & Allen
Thimann Lecture Hall	1965	Anshen & Allen
Thimann Receiving Building	1965	Anshen & Allen
University House	1967	Ratcliff Slama Cadwalader

In 2020, the buildings and college complexes within the campus core are almost all 50 years in age or will be in the next few years, making the “exceptional significance” criterion not applicable to a majority of the potential district contributors. The end of the period of significance would still be under 50 years, dating to 1973. Additionally, most of these buildings and complexes have not undergone changes that would affect their significance status and should

continue to be considered contributors to a potential UCSC campus core historic district. The exception is Kresge College, which is currently undergoing a renewal and expansion project. However, the remaining buildings at Kresge would still contribute to the campus core historic district. Buildings in Table 1 that were constructed from 1971 to 1973 are not yet 50 years in age. The potential UCSC campus core district, with a period of significance of 1964-1973, would likely be found significant under NRHP Criteria Consideration G: properties of exceptional importance that have achieved significance within the past 50 years (36 CFR Part 60).



Source: Data received from UCSC and Watson Heritage Consulting in 2020

10/22/2020

UCSC Campus Core Historic District Potential Contributors

The following four buildings--all located within the campus core--were recorded on DPR forms for the 2005 survey. However, the 2005 survey concluded that more information was needed to determine whether or not the buildings are contributors to a potential campus core historic district. This decision was based on lack of information at the time regarding physical exterior alterations, resulting in a limited ability to assess integrity.

Table 2 - UCSC Campus Core Historic District Properties Needing More Research

Building Name	Construction Year	Architect
Central Heating Plant	1966	Spencer, Lee & Busse
Communications Building	1968	Spencer, Lee & Busse
Hahn Art Facility	1968	UCSC staff
Student Union Redwood	1967	Henrik Bull

Cowell Lime Works National Register Historic District

The Cowell Lime Works National Register Historic District is an extensive complex of extant 19th and 20th century buildings, structures, and associated archaeological features, as well as several other related archaeological sites that include railroad, quarrying, and lime kiln features associated with quicklime production at Cowell Ranch between about 1851 and 1946. The Cowell Lime Works District is scattered over an area of about 30 acres just inside the UCSC main campus entrance. During development of the 2005 LRDP, a NRHP nomination for the Cowell Lime Works Historic District was prepared. The District was determined to be eligible for listing in the NRHP under Criterion A and in the CRHR under Criterion 1 for its role in the development of lime mortar manufacturing in California between 1851 and 1906. While the integrity of many of the buildings and features had been diminished through deterioration, physical damage from development, or adaptive reuse and thus no longer contributed to its significance, the district and many of its features retained their historical significance. A draft historic district management plan was prepared in 2006 with the objective of maintaining the district's historical character; however, this plan has not yet been finalized. As noted above, the Cowell Lime Works Historic District was listed in the NRHP and CRHR in 2007 (NPS #07001220). The following buildings are listed in the National Register as contributors to the Cowell Lime Works Historic District:

Table 3 - Cowell Lime Works National Register Historic District Contributors

Building Name	Address	Construction Year
Blacksmith Shop	93 Ranch View Road	1850s, circa
Blacksmith Shop	93 Ranch View Road	1850s, circa
Cardiff House Women's Center (Ranch House)	117 Carriage House Road	1850s, circa; expanded 1864
Cook House	109 Coolidge Drive	1850s, circa
Cooperage	113 Coolidge Drive	1854
Granary	102 Coolidge Drive	1860s, circa
Hay Barn	94 Ranch View Road	1850s, circa

UC Santa Cruz, Long Range Development Plan, Historic Resources Technical Memorandum

Powder House	90 Ranch View Road	1850s, circa
Stone House (Paymaster's House)	100 Coolidge Drive	1860s, circa
Theater Barn	101 Coolidge Drive	1850s

The following buildings are located within the Cowell Lime Works National Register Historic District boundaries but are considered non-contributors:

Table 4 - Cowell Lime Works National Register Historic District Non-Contributors

Building Name	Address	Construction Year
Barn G	101 Ox Team Road	1860s, circa
Carriage House	105 Carriage House Road	1870s, circa
Farm Slaughter House	103 Farm Road	1900, circa
Receiving Barn (Barn H)	116 Ox Team Road	1860s, circa

Kresge College Historic District Evaluation

In October 2018, architecture+history, llc, in collaboration with Watson Heritage Consulting and Knapp Architects (consultant team), prepared a California Environmental Quality Act (CEQA) historic district evaluation of Kresge College in anticipation of the Kresge College Renewal and Expansion Project (Project). The consultant team concluded that Kresge College is eligible for the CRHR as a historic district under CRHR Criterion 1, at the statewide level of significance, in the area of education for its association with the development of UCSC. Additionally, Kresge College is eligible under CRHR Criterion 3, at the statewide level of significance, in the area of architecture as what appears to be the singular collaboration of master designers: architect Charles Moore (with MLTW) and landscape architect Dan Kiley.

An Environmental Impact Report completed in February 2019 that analyzes the potential impacts of the Kresge Project concludes that the Project will adversely affect the identified Kresge College Historic District (KCHD) through demolition of contributing buildings, renovation, and new construction (Impact CUL-1 Historic Resources).⁴ Mitigation measures proposed to minimize impacts of the Project on the KCHD “do not eliminate or minimize the material impairment of KCHD...to a less than significant level. Therefore, this impact would remain significant and unavoidable.”⁵ Because of these actions, the Project would demolish and adversely alter some of the physical features that convey the KCHD’s significance and justify its inclusion in the CRHR. However, Kresge College would still contribute to the larger campus core historic district.

⁴ UCSC, “Kresge Findings: California Environmental Quality Act Findings in Collection with the Approval of the Kresge College Renewal and Expansion Project, Santa Cruz Campus” (n.d.), 12. Accessed at <https://ppc.ucsc.edu/planning/images/kresge-findings.pdf>.

⁵ Rincon Consultants, Inc., *Kresge College Renewal and Expansion Project, Draft Environmental Impact Report* (November 2018), 4.6-23.

III. 2020 Reconnaissance-Level Survey

In March and May 2020, the consultant team conducted a reconnaissance-level survey of buildings on the UCSC campus that were built before 1980 and had never been documented in previous surveys--either because of their age or because they were located outside of the campus core. Preliminary data sheets for these buildings are provided in Appendix A of this report.

Table 5 - 2020 Reconnaissance Survey, Arranged by Campus Region

Campus Core

Building Name	Construction Year	Architect	Builder	Engineer	Landscape Architect
Astronomy Shop A	1966	UCSC Physical Planning & Construction	Unknown	Unknown	Unknown
Astronomy Shop B	1966	UCSC Physical Planning & Construction	Unknown	Unknown	Unknown
Communications Trailer 1	1979	UCSC Physical Planning & Construction	Unknown	Unknown	Unknown
Cooling Tower 1	1971	Robert Heaton	Unknown	Unknown	Unknown
Fire House	1975	William M. Gillis and Associates	Unknown	Unknown	Unknown
Physical Education Activities Building	1974	UCSC Physical Planning & Construction	Unknown	Unknown	Unknown

Main Entrance

Building Name	Construction Year	Architect	Builder	Engineer	Landscape Architect
Campus Fleet Garage and TSM Office	1971	Gulli & Del Campo	Unknown	Unknown	Unknown
Physical Planning & Construction Trailer 2	1978	UCSC Physical Planning &	Unknown	Unknown	Unknown

UC Santa Cruz, Long Range Development Plan, Historic Resources Technical Memorandum

		Construction			
Sign Shop	1965	UCSC Physical Planning & Construction	Unknown	Unknown	Unknown

West Side

Building Name	Construction Year	Architect	Builder	Engineer	Landscape Architect
Family Student Housing	1971	Ratcliff Slama Cadwalader	Unknown	Unknown	Casey A. Kawamoto
Fieldhouse West	1977	Bull Field Volkman Stockwell	G.W. Davis	Unknown	Unknown
Kiosk for West Entrance	1970	Unknown	Unknown	Unknown	Unknown
Oakes College	1976	McCue, Boone, Tomsick	Unknown	Unknown	Royston, Hanamoto, Beck & Abey

UCSC Farm and Garden

Building Name	Construction Year	Architect	Builder	Engineer	Landscape Architect
Alan Chadwick Garden Solar Greenhouse	1978	Unknown	Unknown	Unknown	Unknown
Farm Chalet	1975	Unknown	Unknown	Unknown	Unknown
Farm Equipment Barn & Sleep loft	1973	Unknown	Unknown	Unknown	Unknown
Farm Vegetable Packing & Storage	1973, circa	Unknown	Unknown	Unknown	Unknown

2300 Delaware Avenue

Building Name	Construction Year	Architect	Builder	Engineer	Landscape Architect
Westside Research Park	1980	Unknown	Unknown	Unknown	Unknown

IV. Summary Observations About Historic Resources on the UCSC Campus

Potential UCSC Campus Core Historic District

As noted above, at the time of the 2005 survey, the earliest buildings on the UCSC campus--completed in 1965--were only 40 years in age and did not meet the 50-year threshold required for buildings eligible for the NRHP. Now that the original campus core buildings have reached or are approaching 50 years in age, it is recommended that UCSC undertake a reevaluation of campus core buildings--guided by an updated and expanded historic context statement--to determine if the UCSC campus core qualifies as a discontinuous historic district under NRHP/CRHR significance criteria. This project could be modeled on the recently completed *University of California, San Diego Campus-wide Historic Context Statement and Historic Resource Survey* (Architectural Resources Group, 2018) and could be a mitigation measure in the UCSC LRDP EIR.

Kresge College

Kresge College was identified in the 2005 survey as being a contributor to a potential UCSC campus core historic district. In 2018, the Kresge College campus was determined eligible for the CRHR as a historic district under CRHR Criteria 1 and 3. As described above, the Kresge College Renewal and Expansion Project, currently underway, will adversely affect the KCHD when construction is complete. In spite of this, Kresge College would still be considered a contributor to the potential UCSC campus core historic district.

Limiting future physical interventions at the Kresge College campus would reduce further impacts on Kresge's ability to contribute to a larger campus core historic district.

Center for Agroecology & Sustainable Food Systems (Farm), Alan Chadwick Garden, and Arboretum

The 1978 LRDP discusses "A Proposed UCSC Natural Resources Management Plan" (August 1977) for the preservation and use of natural resources on the campus. The plan identifies four different natural resource areas at UCSC: the Great Meadow; research reserve and buffer zones; drainage zones; and special project zones.⁶ The LRDP proposes several study areas for preservation, including the UCSC Farm, Alan Chadwick Garden, and Arboretum.⁷ These areas, according to the LRDP, "are to be specifically eliminated from the preferred developable areas of the campus."⁸ The 1988 LRDP designates the UCSC Farm, Garden, and Arboretum as "Site-specific Research Areas."⁹

⁶ Esherick, Homsey, Dodge and Davis et al., *Long Range Development Plan, University of California, Santa Cruz* (1978), 19.

⁷ Ibid.

⁸ Ibid., 20.

⁹ UCSC, *Long Range Development Plan, University of California, Santa Cruz* (1988), n.p.

The UCSC Farm and Alan Chadwick Garden are now recognized internationally for training and research in organic horticulture and agriculture.¹⁰ Both sites contain age-eligible (more than 50 years old) buildings and structures that were documented in the 2020 reconnaissance-level survey. Because of the potential significance of the UCSC Farm and Garden (and possibly the Arboretum, if connected) related to organic horticultural and agricultural education and training.

It is recommended that a future project fully document and evaluate these sites under NRHP/CRHR criteria.

Oakes College

As a result of demands by the Black Liberation Front and other campus minority groups, in February 1969, the Academic Senate approved the development of UCSC's first ethnic studies college.¹¹ Founded in 1972, Oakes College is the first college at UCSC dedicated to the study of minority groups in California. Oakes co-founder and UCSC's only Black professor at the time, Herman J. Blake was the college's first provost.

Designed by the architecture firm of McCue, Boone, Tomsick, the buildings of Oakes College were completed in 1976. Not included in the 2005 survey because of its later construction date, Oakes College was documented in the 2020 reconnaissance-level survey.

It is recommended that Oakes College be documented and evaluated under NRHP/CRHR criteria for its potential significance as UCSC's first ethnic studies college and its history of supporting UCSC's underrepresented minority communities.

¹⁰ UCSC, "Center for Agroecology & Sustainable Food Systems (Farm) and Alan Chadwick Garden," UCSC website. Accessed at <https://casfs.ucsc.edu/about/facilities.html>.

¹¹ UCSC, "History of Oakes," UCSC website. Accessed at <https://web.archive.org/web/20051217212513/http://oakes.ucsc.edu/history.htm>.

V. Works Cited

Architectural Resources Group. *Campus Core Historic Context Statement*. 2006.

Rincon Consultants, Inc. *Kresge College Renewal and Expansion Project, Draft Environmental Impact Report*. November 2018.

UCSC. "Center for Agroecology & Sustainable Food Systems (Farm) and Alan Chadwick Garden." UCSC website. Accessed at <https://casfs.ucsc.edu/about/facilities.html>.

UCSC. "History of Oakes." UCSC website. Accessed at <https://web.archive.org/web/20051217212513/http://oakes.ucsc.edu/history.htm>.

UCSC. "Kresge Findings: California Environmental Quality Act Findings in Collection with the Approval of the Kresge College Renewal and Expansion Project, Santa Cruz Campus." No date. Accessed at <https://ppc.ucsc.edu/planning/images/kresge-findings.pdf>.

UCSC. *Long Range Development Plans, University of California, Santa Cruz*. 1963, 1971, 1988, and 2005.

VI. Appendices

Appendix A: 2020 Reconnaissance-Level Survey Building Sheets

In March and May 2020, architecture+history, llc, and Watson Heritage Consulting conducted a reconnaissance-level survey of properties on the University of California, Santa Cruz campus that were built before 1980 and had never been documented in previous surveys. (One property constructed in 1980, the Westside Research Park at 2300 Delaware Avenue, is included because it is in the LRDP plan area.)

The following data sheets provide an overview description of properties surveyed in 2020, arranged chronologically by construction year.

SIGN SHOP



Address: 107 Ox Team Road

Construction date: 1965

Architect: UCSC Physical Planning & Construction

Builder: Unknown

Engineer: Unknown

Description: Prefabricated quonset hut with board-and-batten facade.

ASTRONOMY SHOP A



Address: 624 Red Hill Road

Construction date: 1966

Architect: UCSC Physical Planning & Construction

Builder: Unknown

Engineer: Unknown

Landscape architect: Unknown

Description: Prefabricated Butler-type building.

ASTRONOMY SHOP B



Address: 622 Red Hill Road

Construction date: 1966

Architect: UCSC Physical Planning & Construction

Builder: Unknown

Engineer: Unknown

Landscape architect: Unknown

Description: Prefabricated Butler-type building.

ALAN CHADWICK GARDEN



Address: 606 Merrill Road

Construction date: 1967; 1978 (Solar greenhouse)

Architect: Unknown

Landscape architect: Unknown

Description: Established in 1967, the three-acre Alan Chadwick Garden is composed of buildings, structures, and landscapes related to agricultural and horticultural education.

KIOSK FOR WEST ENTRANCE



Address: 200 Heller Drive

Construction date: 1970

Architect: UCSC Physical Planning & Construction

Builder: Unknown

Engineer: Unknown

Landscape architect: Unknown

Description: Simple wood-frame kiosk building.

CAMPUS FLEET GARAGE AND TSM OFFICE



Address: 113 Ox Team Road

Construction date: 1971

Architect: Gulli & Del Campo

Builder: Unknown

Engineer: Unknown

Landscape architect: Unknown

Description: Wood-frame barn-type building with diagonally-placed wood siding on the exterior walls.

STUDENT UNION



Address: 504 Steinhart Way

Construction date: 1971

Architect: Bull Field Volkmann Stockwell

Builder: Unknown

Engineer: Unknown

Landscape architect: Unknown

Description: Redwood, board-and-batten-sheathed building with hipped roofs and wide, overhanging eaves.

COOLING TOWER 1



Address: 612 Red Hill Road

Construction date: 1969-1971

Architect: Robert Heaton

Builder: Unknown

Engineer: Unknown

Landscape architect: Unknown

Description: Built on a 1,025 square-foot pad to support Thimann Labs.

FAMILY STUDENT HOUSING



Address: 101 Koshland Way

Construction date: 1970-71

Architect: Ratcliff Slama Cadwalader

Builder: Unknown

Engineer: Unknown

Landscape architect: Casey A. Kawamoto

Description: Large complex of multi-story residential housing characterized by boxy massings and stuccoed facades.

CENTER FOR AGROECOLOGY & SUSTAINABLE FOOD SYSTEMS (UCSC FARM)



Address: 104 Farm Road

Construction date: 1971; 1973 (Farm Equipment Barn & Sleep Loft)

Architect: Unknown

Builder: Unknown

Engineer: Unknown

Landscape architect: Unknown

Description: Established in 1971, the 30-acre Farm is composed of dozens of buildings and structures and designed landscapes related to agroecology education.

PHYSICAL EDUCATION ACTIVITIES BUILDING



Address: 403 East Field Service Road

Construction date: 1974

Architect: UCSC Physical Planning & Construction

Builder: Unknown

Engineer: Unknown

Landscape architect: Unknown

Description: Prefabricated Butler-type building.

FIRE HOUSE



Address: 701 Chinguapin Road

Construction date: 1975

Architect: William M. Gillis and Associates

Builder: Unknown

Engineer: Unknown

Landscape architect: Unknown

Description: Wood-sheathed exterior walls, gabled, shingle roofs.

OAKES COLLEGE



Address: 233 Oakes Road

Construction date: 1976-1977

Architect: McCue, Boone, Tomsick (1976-1977); Palmer & Rahe (1988)

Landscape architect: Royston, Hanamoto, Beck & Abey (1976-1977); Thomas Scherer (1988)

Description: Founded in 1972, Oakes College was the seventh college established at UC Santa Cruz. The campus is characterized by boxy, shingle-sheathed buildings spread across a designed landscape divided by a ravine.

FIELDHOUSE WEST



Address: 311 Rachel Carson Service Road

Construction date: 1977

Architect: Bull Field Volkmann Stockwell

Builder: G.W. Davis

Engineer: Unknown

Landscape architect: Unknown

Description: Board-and-batten exterior walls, gabled, shingle roofs; expansive window wall on east facade.

PHYSICAL PLANNING & CONSTRUCTION TRAILER 2



Address: 105 Ox Team Road

Construction date: 1978

Architect: UCSC Physical Planning & Construction

Builder: Unknown

Engineer: Unknown

Landscape architect: Unknown

Description: Prefabricated modular trailer.

COMMUNICATIONS TRAILER 1



Address: 625 Red Hill Road

Construction date: 1979

Architect: UCSC Physical Planning & Construction

Builder: Unknown

Engineer: Unknown

Landscape architect: Unknown

Description: Prefabricated modular trailer.

WESTSIDE RESEARCH PARK



Address: 2300 Delaware Avenue

Construction date: 1980

Architect: Unknown

Builder: Unknown

Engineer: Unknown

Landscape architect: Unknown

Description: The 2300 Delaware Avenue site was a commercial nursery owned by Peter Antonelli through the late 1970s.¹² In 1979, Synertek, a Santa Clara-based subsidiary of Honeywell Inc., applied for permits to build a \$40 million computer-chip manufacturing and research plant at the 20.3-acre site. The proposed plant was 175,000 square feet, including a central manufacturing building and an office-cafeteria complex.¹³ A permit was issued for the buildings in November 1980.¹⁴

¹² "Synertek: Zoners Want More Time For Study," *Santa Cruz Sentinel*, October 12, 1979, 27.

¹³ *Ibid.*

¹⁴ "Synertek Issued Permit," *Santa Cruz Sentinel*, November 9, 1980, 30.

Appendix B: UCSC Campus Building Database

The following database includes every building on the UCSC campus with associated construction date; architect, builder, engineer, and landscape architect; and information regarding whether or not the building was included in previous or current historic resources surveys. The database was developed using various databases and information provided by the UCSC Physical & Environmental Planning Services department.

BUILDING NAME	ADDRESS	CAMPUS REGION	CONSTRUCTION YEAR	ARCHITECT	BUILDER
Academic Resource Center	408 McHenry Road	Central Core	1989	Unknown	Unknown
Academic Resource Center Multipurpose Building	410 McHenry Road	Central Core	1989	Unknown	Unknown
Agroecology Modular A1	201 Village Road	Agroecology	1997	Unknown	Unknown
Agroecology Modular A2	203 Village Road	Agroecology	1997	Unknown	Unknown
Agroecology Modular A3	205 Village Road	Agroecology	1985	Unknown	Unknown
Agroecology Trailer 4	160 Farm Road	Agroecology	1988	Unknown	Unknown
Arboretum	104 Arboretum Road	Arboretum Neighborhood	1967, 1975	UCSC Physical Planning & Construction	Unknown
Arboretum Gift Shop	104 Arboretum Road	Arboretum Neighborhood	1994	Unknown	Unknown
Arboretum Gift Shop	104 Arboretum Road	Arboretum Neighborhood	1994	Unknown	Unknown
Arboretum Horticulture 1	120 Arboretum Road	Arboretum Neighborhood	1988	Unknown	Unknown
Arboretum Horticulture 2	122 Arboretum Road	Arboretum Neighborhood	1994	Unknown	Unknown
Arboretum Kiosk	103 Arboretum Road	Arboretum Neighborhood	1994	Unknown	Unknown
Arboretum Kubota Equipment Shed	123 Arboretum Road	Arboretum Neighborhood	1988	Unknown	Unknown
Astronomy Shop A	624 Red Hill Road	Science and Engineering Hill	1966	UCSC Physical Planning & Construction	Unknown
Astronomy Shop B	622 Red Hill Road	Science and Engineering Hill	1966	UCSC Physical Planning & Construction	Unknown
Barn G	101 Ox Team Road	Main Entrance Area	1860s, circa	Unknown	Unknown
Bay Tree Bookstore	500 Steinhart Way	Quarry Plaza	2001	Esherick Homsey Dodge & Davis (EHDD)	Unknown
Biomedical Sciences	575 McLaughlin Drive	Science and Engineering Hill	2012	Esherick Homsey Dodge & Davis (EHDD)	Unknown
Blacksmith Shop	93 Ranch View Road	Main Entrance Area	1850s, circa	Unknown	Unknown
Blacksmith Shop	93 Ranch View Road	Main Entrance Area	1850s, circa	Unknown	Unknown
Campus Fleet Garage and TSM Office	113 Ox Team Road	Main Entrance Area	1971	Unknown	Unknown
Campus Fleet Washbay	104 Carriage House Road	Main Entrance Area	2013	Unknown	Unknown
Cardiff House Women's Center (Ranch House)	117 Carriage House Road	Main Entrance Area	1850s, circa; expanded 1864	Unknown	Unknown
Carriage House	105 Carriage House Road	Main Entrance Area	1870s, circa	Unknown	Unknown
Center for Adaptive Optics	540 Red Hill Road	Science and Engineering Hill	2002	Esherick Homsey Dodge & Davis (EHDD)	Unknown
Center for Agroecology & Sustainable Food Systems Lab	152 Farm Road	Agroecology	1983	Unknown	Unknown
Central Heating Plant	610 Red Hill Road	Science and Engineering Hill	1966	Spencer, Lee & Busse	Unknown
Central Heating Plant 2	604 Red Hill Road	Science and Engineering Hill	2003	Unknown	Unknown
Classroom Unit 1	520 Steinhart Way	Quarry Plaza	1972	Marquis & Stoller	Unknown
Cogen Mechanical Electrical Structure	608 Red Hill Road	Science and Engineering Hill	2015	Unknown	Unknown
College Nine Apartment Building 1	715 College Ten Road	College Nine	2000	Esherick Homsey Dodge & Davis (EHDD)	Unknown
College Nine Apartment Building 2	725 College Ten Road	College Nine	2000	Esherick Homsey Dodge & Davis (EHDD)	Unknown
College Nine Apartment Building 3	735 College Ten Road	College Nine	2000	Esherick Homsey Dodge & Davis (EHDD)	Unknown
College Nine Apartment Building 4	740 College Ten Road	College Nine	2000	Esherick Homsey Dodge & Davis (EHDD)	Unknown
College Nine Apartment Building 5	750 College Ten Road	College Nine	2000	Esherick Homsey Dodge & Davis (EHDD)	Unknown
College Nine Commons	719 College Ten Road	College Nine	2000	Esherick Homsey Dodge & Davis (EHDD)	Unknown
College Nine Dining Hall	615 College Nine Road	College Nine	2002	Esherick Homsey Dodge & Davis (EHDD)	Unknown
College Nine Residence Hall 1	630 College Nine Road	College Nine	2002	Esherick Homsey Dodge & Davis (EHDD)	Unknown
College Nine Residence Hall 2	610 College Nine Road	College Nine	2002	Esherick Homsey Dodge & Davis (EHDD)	Unknown
College Nine Residence Hall 3	620 College Nine Road	College Nine	2002	Esherick Homsey Dodge & Davis (EHDD)	Unknown
College Nine Residence Hall Lounge	608 College Nine Road	College Nine	2002	Esherick Homsey Dodge & Davis (EHDD)	Unknown
College Ten Residence Hall 4	606 College Ten Road	College Ten	2002	Esherick Homsey Dodge & Davis (EHDD)	Unknown
College Ten Residence Hall 5	602 College Ten Road	College Ten	2002	Esherick Homsey Dodge & Davis (EHDD)	Unknown
College Ten Residence Hall 6	604 College Ten Road	College Ten	2002	Esherick Homsey Dodge & Davis (EHDD)	Unknown
Communications Building	620 Baskin Circle	Science and Engineering Hill	1968	Spencer, Lee & Busse	Unknown
Communications Trailer 1	625 Red Hill Road	Science and Engineering Hill	1979	Unknown	Unknown
Communications Trailer 3	630 Red Hill Road	Science and Engineering Hill	1984	Unknown	Unknown
Cook House	109 Coolidge Drive	Main Entrance Area	1850s, circa	Unknown	Unknown
Cooling Tower 1	612 Red Hill Road	Science and Engineering Hill	1971	Robert Heaton	Unknown
Cooling Tower 4 EMS	551 Red Hill Road	Science and Engineering Hill	2012	Unknown	Unknown
Cooperage	113 Coolidge Drive	Main Entrance Area	1854	Unknown	Unknown
Core West Parking Structure	590 Heller Drive	Science and Engineering Hill	2001	Watry Design Group	Unknown
Cowell College Academic Building	518 Cowell-Stevenson Road	Cowell College	1966	Wurster, Bernardi & Emmons	Branough or Jasper Construction Co.
Cowell College Adams House	516 Cowell-Stevenson Road	Cowell College	1966	Wurster, Bernardi & Emmons	Branough or Jasper Construction Co.
Cowell College Apartment Building 1	501 Cowell Service Road	Cowell College	2004	BAR Architects	Unknown
Cowell College Apartment Building 2	503 Cowell Service Road	Cowell College	2004	BAR Architects	Unknown
Cowell College Apartment Building 3	505 Cowell Service Road	Cowell College	2004	BAR Architects	Unknown

Cowell College Beard House	511 Cowell Service Road	Cowell College	1966	Wurster, Bernardi & Emmons	Branough or Jasper Construction Co.
Cowell College Classroom Building	518 Cowell-Stevenson Road	Cowell College	1966	Wurster, Bernardi & Emmons	Branough or Jasper Construction Co.
Cowell College Commons	520 Cowell-Stevenson Road	Cowell College	1966	Wurster, Bernardi & Emmons	Branough or Jasper Construction Co.
Cowell College Commons	520 Cowell-Stevenson Road	Cowell College	1966	Wurster, Bernardi & Emmons	Branough or Jasper Construction Co.
Cowell College Faculty Office Addition	521 Cowell Service Road	Cowell College	1987	Unknown	Unknown
Cowell College Garage	500 Cowell Service Road	Cowell College	1966	Wurster, Bernardi & Emmons	Branough or Jasper Construction Co.
Cowell College House	500 Cowell Service Road	Cowell College	1966	Wurster, Bernardi & Emmons	Branough or Jasper Construction Co.
Cowell College Library	523 Cowell Service Road	Cowell College	1966	Wurster, Bernardi & Emmons	Branough or Jasper Construction Co.
Cowell College Morison House	514 Cowell-Stevenson Road	Cowell College	1966	Wurster, Bernardi & Emmons	Branough or Jasper Construction Co.
Cowell College Parkman House	510 Cowell-Stevenson Road	Cowell College	1966	Wurster, Bernardi & Emmons	Branough or Jasper Construction Co.
Cowell College Parrington House	513 Cowell Service Road	Cowell College	1966	Wurster, Bernardi & Emmons	Branough or Jasper Construction Co.
Cowell College Prescott House	512 Cowell-Stevenson Road	Cowell College	1966	Wurster, Bernardi & Emmons	Branough or Jasper Construction Co.
Cowell College Scholars House	508 Cowell-Stevenson Road	Cowell College	1966	Wurster, Bernardi & Emmons	Branough or Jasper Construction Co.
Cowell College Turner House	517 Cowell Service Road	Cowell College	1966	Wurster, Bernardi & Emmons	Branough or Jasper Construction Co.
Cowell Student Health Center (original construction)	525 McLaughlin Drive	Student Health Center	1970	John Funk	Unknown
Cowell Student Health Center Addition	525 McLaughlin Drive	Student Health Center	2010	Unknown	Unknown
Cowell Student Health Center Addition	525 McLaughlin Drive	Student Health Center	2010	Unknown	Unknown
Crown College Admin Building	620 Crown Road	Crown College	1967	Ernest J. Kump & Associates	Jasper Construction
Crown College Classroom Building	624 Crown Road	Crown College	1967	Ernest J. Kump & Associates	Jasper Construction
Crown College Descartes House	655 Crown Service Road	Crown College	1967	Ernest J. Kump & Associates	Jasper Construction
Crown College Faculty Wing	670 Crown Service Road	Crown College	1967	Ernest J. Kump & Associates	Jasper Construction
Crown College Galen House	618 Crown Road	Crown College	1967	Ernest J. Kump & Associates	Jasper Construction
Crown College Galileo House	675 Crown Service Road	Crown College	1967	Ernest J. Kump & Associates	Jasper Construction
Crown College Gatehouse	628 Crown Road	Crown College	1967	Ernest J. Kump & Associates	Jasper Construction
Crown College Gauss House	685 Crown Service Road	Crown College	1967	Ernest J. Kump & Associates	Jasper Construction
Crown College Harvey House	625 Crown Service Road	Crown College	1967	Ernest J. Kump & Associates	Jasper Construction
Crown College House	660 Crown Service Road	Crown College	1968	Ernest J. Kump & Associates	Jasper Construction
Crown College Leonardo House	605 Crown Service Road	Crown College	1967	Ernest J. Kump & Associates	Jasper Construction
Crown College Library	680 Crown Service Road	Crown College	1968	Ernest J. Kump & Associates	Jasper Construction
Crown College Maxwell House	615 Crown Service Road	Crown College	1967	Ernest J. Kump & Associates	Jasper Construction
Crown College Preceptors Apartments	602 Crown Road	Crown College	1968	Ernest J. Kump & Associates	Jasper Construction
Crown College Rutherford House	665 Crown Service Road	Crown College	1967	Ernest J. Kump & Associates	Jasper Construction
Crown-Merrill Housing Building 1	702 East Road	Crown College / Merrill College	1986	Veitzer Shonkwiler	Unknown
Crown-Merrill Housing Building 10	740 East Road	Crown College / Merrill College	1986	Veitzer Shonkwiler	Unknown
Crown-Merrill Housing Building 11	742 East Road	Crown College / Merrill College	1986	Veitzer Shonkwiler	Unknown
Crown-Merrill Housing Building 12	752 East Road	Crown College / Merrill College	1986	Veitzer Shonkwiler	Unknown
Crown-Merrill Housing Building 13	732 East Road	Crown College / Merrill College	1986	Veitzer Shonkwiler	Unknown
Crown-Merrill Housing Building 14	730 East Road	Crown College / Merrill College	1986	Veitzer Shonkwiler	Unknown
Crown-Merrill Housing Building 2	706 East Road	Crown College / Merrill College	1986	Veitzer Shonkwiler	Unknown
Crown-Merrill Housing Building 3	708 East Road	Crown College / Merrill College	1986	Veitzer Shonkwiler	Unknown
Crown-Merrill Housing Building 4	712 East Road	Crown College / Merrill College	1986	Veitzer Shonkwiler	Unknown
Crown-Merrill Housing Building 5	722 East Road	Crown College / Merrill College	1986	Veitzer Shonkwiler	Unknown
Crown-Merrill Housing Building 6	710 East Road	Crown College / Merrill College	1986	Veitzer Shonkwiler	Unknown
Crown-Merrill Housing Building 7	716 East Road	Crown College / Merrill College	1986	Veitzer Shonkwiler	Unknown
Crown-Merrill Housing Building 8	724 East Road	Crown College / Merrill College	1986	Veitzer Shonkwiler	Unknown
Crown-Merrill Housing Building 9	750 East Road	Crown College / Merrill College	1986	Veitzer Shonkwiler	Unknown
Crown-Merrill Multipurpose Building 15	714 East Road	Crown College / Merrill College	1986	Veitzer Shonkwiler	Unknown
Crown-Merrill Multipurpose Building 15	714 East Road	Crown College / Merrill College	1986	Veitzer Shonkwiler	Unknown
Digital Arts Research Center	407 McHenry Road	Elena Baskin Visual Arts Center	2009	Bohlin Cywinski Jackson	Unknown
Earth & Marine Sciences	552 Red Hill Road	Science and Engineering Hill	1993	McLellan & Copenhagen	Unknown
East Field House	418 Hagar Drive	OPERS Eastside	1965	Callister, Payne & Rosse	Unknown
Elena Baskin Building A	425 Baskin Arts Service Road	Elena Baskin Visual Arts Center	1984	Marquis & Associates	Unknown
Elena Baskin Building B	429 Baskin Arts Service Road	Elena Baskin Visual Arts Center	1984	Marquis & Associates	Unknown
Elena Baskin Building C	431 Baskin Arts Service Road	Elena Baskin Visual Arts Center	1984	Marquis & Associates	Unknown
Elena Baskin Building D	433 Baskin Arts Service Road	Elena Baskin Visual Arts Center	1984	Marquis & Associates	Unknown
Elena Baskin Building E	424 Baskin Arts Service Road	Elena Baskin Visual Arts Center	1984	Marquis & Associates	Unknown
Elena Baskin Building F	430 Baskin Arts Service Road	Elena Baskin Visual Arts Center	1984	Marquis & Associates	Unknown
Elena Baskin Building G	432 Baskin Arts Service Road	Elena Baskin Visual Arts Center	1984	Marquis & Associates	Unknown

Family Student Housing F 24-29	624 Koshland Way	Family Student Housing	1971	Ratcliff Slama Cadwalader	Unknown
Family Student Housing F 30-33	630 Koshland Way	Family Student Housing	1971	Ratcliff Slama Cadwalader	Unknown
Family Student Housing F 30-33	630 Koshland Way	Family Student Housing	1971	Ratcliff Slama Cadwalader	Unknown
Family Student Housing F 6-10	606 Koshland Way	Family Student Housing	1971	Ratcliff Slama Cadwalader	Unknown
Family Student Housing F 6-10	606 Koshland Way	Family Student Housing	1971	Ratcliff Slama Cadwalader	Unknown
Family Student Housing F 6-10	606 Koshland Way	Family Student Housing	1971	Ratcliff Slama Cadwalader	Unknown
Family Student Housing F 6-10	606 Koshland Way	Family Student Housing	1971	Ratcliff Slama Cadwalader	Unknown
Family Student Housing G 12-14	712 Koshland Way	Family Student Housing	1970	Ratcliff Slama Cadwalader	Unknown
Family Student Housing G 15-16	715 Koshland Way	Family Student Housing	1970	Ratcliff Slama Cadwalader	Unknown
Family Student Housing G 15-16	715 Koshland Way	Family Student Housing	1970	Ratcliff Slama Cadwalader	Unknown
Family Student Housing G 15-16	715 Koshland Way	Family Student Housing	1970	Ratcliff Slama Cadwalader	Unknown
Family Student Housing G 17-21	717 Koshland Way	Family Student Housing	1970	Ratcliff Slama Cadwalader	Unknown
Family Student Housing G 17-21	717 Koshland Way	Family Student Housing	1970	Ratcliff Slama Cadwalader	Unknown
Family Student Housing G 17-21	717 Koshland Way	Family Student Housing	1970	Ratcliff Slama Cadwalader	Unknown
Family Student Housing G 17-21	717 Koshland Way	Family Student Housing	1970	Ratcliff Slama Cadwalader	Unknown
Family Student Housing H 1-13	801 Koshland Way	Family Student Housing	1970	Ratcliff Slama Cadwalader	Unknown
Family Student Housing H 1-13	801 Koshland Way	Family Student Housing	1970	Ratcliff Slama Cadwalader	Unknown
Family Student Housing H 1-13	801 Koshland Way	Family Student Housing	1970	Ratcliff Slama Cadwalader	Unknown
Family Student Housing H 1-13	801 Koshland Way	Family Student Housing	1970	Ratcliff Slama Cadwalader	Unknown
Family Student Housing H 1-13	801 Koshland Way	Family Student Housing	1970	Ratcliff Slama Cadwalader	Unknown
Family Student Housing H 1-13	801 Koshland Way	Family Student Housing	1970	Ratcliff Slama Cadwalader	Unknown
Family Student Housing H 1-13	801 Koshland Way	Family Student Housing	1970	Ratcliff Slama Cadwalader	Unknown
Family Student Housing H 1-13	801 Koshland Way	Family Student Housing	1970	Ratcliff Slama Cadwalader	Unknown
Family Student Housing H 1-13	801 Koshland Way	Family Student Housing	1970	Ratcliff Slama Cadwalader	Unknown
Family Student Housing H 1-13	801 Koshland Way	Family Student Housing	1970	Ratcliff Slama Cadwalader	Unknown
Family Student Housing H 1-13	801 Koshland Way	Family Student Housing	1970	Ratcliff Slama Cadwalader	Unknown
Family Student Housing H 1-13	801 Koshland Way	Family Student Housing	1970	Ratcliff Slama Cadwalader	Unknown
Family Student Housing H 14-18	814 Koshland Way	Family Student Housing	1970	Ratcliff Slama Cadwalader	Unknown
Family Student Housing H 14-18	814 Koshland Way	Family Student Housing	1970	Ratcliff Slama Cadwalader	Unknown
Family Student Housing H 14-18	814 Koshland Way	Family Student Housing	1970	Ratcliff Slama Cadwalader	Unknown
Family Student Housing H 19-22	819 Koshland Way	Family Student Housing	1970	Ratcliff Slama Cadwalader	Unknown
Family Student Housing H 19-22	819 Koshland Way	Family Student Housing	1970	Ratcliff Slama Cadwalader	Unknown
Family Student Housing H 19-22	819 Koshland Way	Family Student Housing	1970	Ratcliff Slama Cadwalader	Unknown
Family Student Housing H 19-22	819 Koshland Way	Family Student Housing	1970	Ratcliff Slama Cadwalader	Unknown
Family Student Housing H 19-22	819 Koshland Way	Family Student Housing	1970	Ratcliff Slama Cadwalader	Unknown
Family Student Housing H 23-29	823 Koshland Way	Family Student Housing	1970	Ratcliff Slama Cadwalader	Unknown
Family Student Housing H 23-29	823 Koshland Way	Family Student Housing	1970	Ratcliff Slama Cadwalader	Unknown
Family Student Housing H 23-29	823 Koshland Way	Family Student Housing	1970	Ratcliff Slama Cadwalader	Unknown
Family Student Housing H 23-29	823 Koshland Way	Family Student Housing	1970	Ratcliff Slama Cadwalader	Unknown
Family Student Housing H 30-33	830 Koshland Way	Family Student Housing	1970	Ratcliff Slama Cadwalader	Unknown
Family Student Housing H 30-33	830 Koshland Way	Family Student Housing	1970	Ratcliff Slama Cadwalader	Unknown
Family Student Housing H 30-33	830 Koshland Way	Family Student Housing	1970	Ratcliff Slama Cadwalader	Unknown
Family Student Housing Maintenance	520 Koshland Way	Family Student Housing	1979	Ratcliff Slama Cadwalader	Unknown
Farm Chalet	143 Farm Road	Agroecology	1975	Unknown	Unknown
Farm Chalet	143 Farm Road	Agroecology	1975	Unknown	Unknown
Farm Equipment Barn & Sleep loft	104 Farm Road	Agroecology	1973	Unknown	Unknown
Farm Louise Cain Gatehouse	164 Farm Road	Agroecology	1986	Unknown	Unknown
Farm Slaughter House	103 Farm Road	Agroecology	1900, circa	Unknown	Unknown
Farm Vegetable Packing & Storage	150 Farm Road	Agroecology	1973, circa	Unknown	Unknown
Fieldhouse West	311 Rachel Carson Service Road	Rachel Carson College	1977	Bull Field Volkmann Stockwell	G.W. Davis
Fire House	701 Chinquapin Road	Crown College / Merrill College	1975	William M. Gillis and Associates	Unknown
Gamelan Studio	404 McHenry Road	Music Center Neighborhood	1998	Unknown	Unknown
Graduate Commons	508 Steinhart Way	Quarry Plaza	2001	Unknown	Unknown
Graduate Student Housing 1	615 Heller Drive	Graduate Student Housing	1986	Veitzer Shohkwiler	Unknown
Graduate Student Housing 2	625 Heller Drive	Graduate Student Housing	1986	Veitzer Shohkwiler	Unknown
Graduate Student Housing 3	635 Heller Drive	Graduate Student Housing	1986	Veitzer Shohkwiler	Unknown
Graduate Student Housing 4	645 Heller Drive	Graduate Student Housing	1986	Veitzer Shohkwiler	Unknown

Granary	102 Coolidge Drive	Main Entrance	1860s, circa	Unknown	Unknown
Hagar Court Offices	151 Hagar Court	Hagar Court Employee Housing	1981	Ellmore Titus	Unknown
Hahn Art Facility	521 Cowell-Stevenson Road	Stevenson College	1968	UCSC staff	Unknown
Hahn Student Services	400 Hahn Road	Quarry Plaza	1965	Ernest J. Kump	King-Hannan Corporation
Hay Barn	94 Ranch View Road	Main Entrance	1850s, circa	Unknown	Unknown
Humanities & Social Sciences Building	504 Cowell-Stevenson Road	Humanities Center	2006	Thomas Hacker	Unknown
Humanities Auditorium	502 Cowell-Stevenson Road	Humanities Center	2006	Thomas Hacker	Unknown
Humanities Building 1	506 Cowell-Stevenson Road	Humanities Center	2006	Thomas Hacker	Unknown
Infant & Toddler Care Modular Unit	550 Koshland Way	Family Student Housing	2000	Unknown	Unknown
Jack Baskin Engineering Auditorium	605 Baskin Circle	Science and Engineering Hill	2004	Anshen & Allen	Unknown
Jack Baskin Engineering Building	606 Engineering Loop	Science and Engineering Hill	1971	Reid & Tarics	Unknown
Kerr Hall	500 Kerr Road	Theater Arts Center	1973	Germano Milano & Associates	Unknown
Kiosk for East Entrance	108 Coolidge Drive	Main Entrance	2003	Unknown	Unknown
Kiosk for West Entrance	200 Heller Drive	West Entrance	1970	Unknown	Unknown
Kresge College Academic Building West Wing	500 Porter-Kresge Road	Kresge College	1973	MLTW Moore - Turnbull	Bogard Construction
Kresge College Annex Building A	516 Porter-Kresge Road	Kresge College	1991	Unknown	Unknown
Kresge College Annex Building B	522 Porter-Kresge Road	Kresge College	1991	Unknown	Unknown
Kresge College Apartment Building J	417 Porter-Kresge Road	Kresge College	2004	BAR Architects	Unknown
Kresge College Apartment Building K	419 Porter-Kresge Road	Kresge College	2004	BAR Architects	Unknown
Kresge College Assembly Building	544 Porter-Kresge Road	Kresge College	1973	MLTW Moore - Turnbull	Bogard Construction
Kresge College Classroom Building	524 Porter-Kresge Road	Kresge College	1973	MLTW Moore - Turnbull	Bogard Construction
Kresge College House	508 Porter-Kresge Road	Kresge College	1973	MLTW Moore - Turnbull	Bogard Construction
Kresge College House	508 Porter-Kresge Road	Kresge College	1973	MLTW Moore - Turnbull	Bogard Construction
Kresge College House 01	506 Porter-Kresge Road	Kresge College	1973	MLTW Moore - Turnbull	Bogard Construction
Kresge College House 02	514 Porter-Kresge Road	Kresge College	1973	MLTW Moore - Turnbull	Bogard Construction
Kresge College House 03	518 Porter-Kresge Road	Kresge College	1973	MLTW Moore - Turnbull	Bogard Construction
Kresge College House 04	532 Porter-Kresge Road	Kresge College	1973	MLTW Moore - Turnbull	Bogard Construction
Kresge College House 05	536 Porter-Kresge Road	Kresge College	1973	MLTW Moore - Turnbull	Bogard Construction
Kresge College House 06	538 Porter-Kresge Road	Kresge College	1973	MLTW Moore - Turnbull	Bogard Construction
Kresge College House 07	540 Porter-Kresge Road	Kresge College	1973	MLTW Moore - Turnbull	Bogard Construction
Kresge College House 08	534 Porter-Kresge Road	Kresge College	1973	MLTW Moore - Turnbull	Bogard Construction
Kresge College House 09	526 Porter-Kresge Road	Kresge College	1973	MLTW Moore - Turnbull	Bogard Construction
Kresge College House 10	520 Porter-Kresge Road	Kresge College	1973	MLTW Moore - Turnbull	Bogard Construction
Kresge College House 11	512 Porter-Kresge Road	Kresge College	1973	MLTW Moore - Turnbull	Bogard Construction
Kresge College Library	530 Porter-Kresge Road	Kresge College	1973	MLTW Moore - Turnbull	Bogard Construction
Kresge College Lounge	500 Porter-Kresge Road	Kresge College	1973	MLTW Moore - Turnbull	Bogard Construction
Kresge College Mini Gym	504 Porter-Kresge Road	Kresge College	1973	MLTW Moore - Turnbull	Bogard Construction
Kresge College Staff Apartments ABC	502 Porter-Kresge Road	Kresge College	1973	MLTW Moore - Turnbull	Bogard Construction
Liquid Propane Gas Building	1456 High Street	Arboretum Neighborhood	1968	Unknown	Unknown
McHenry Library	414 McHenry Road	Central Core	1966	John Carl Warnecke & Assoc.	Rothschild, Raffin & Weirick, Inc.
Merrill College Academic Building	639 Merrill Road	Merrill College	1968	Campbell & Wong & Associates	Rosewall & Sons
Merrill College Administration Building	645 Merrill Road	Merrill College	1968	Campbell & Wong & Associates	Rosewall & Sons
Merrill College Common	661 Merrill Service Road	Merrill College	1968	Campbell & Wong & Associates	Rosewall & Sons
Merrill College Dining Common	630 Crown Road	Merrill College	1968	Campbell & Wong & Associates	Rosewall & Sons
Merrill College Dining Common	630 Crown Road	Merrill College	1968	Campbell & Wong & Associates	Rosewall & Sons
Merrill College Faculty Common	637 Merrill Road	Merrill College	1971	Campbell & Wong & Associates	Rosewall & Sons
Merrill College Faculty Office Annex	635 Merrill Road	Merrill College	1988	Unknown	Unknown
Merrill College Garage	622 Merrill Road	Merrill College	1970	Campbell & Wong & Associates	Rosewall & Sons
Merrill College House	620 Merrill Road	Merrill College	1970	Campbell & Wong & Associates	Rosewall & Sons
Merrill College House	620 Merrill Road	Merrill College	1970	Campbell & Wong & Associates	Rosewall & Sons
Merrill College House A	660 Merrill Service Road	Merrill College	1968	Campbell & Wong & Associates	Rosewall & Sons
Merrill College House B	650 Merrill Service Road	Merrill College	1968	Campbell & Wong & Associates	Rosewall & Sons
Merrill College House C	634 Merrill Road	Merrill College	1969	Campbell & Wong & Associates	Rosewall & Sons
Merrill College House D	632 Merrill Road	Merrill College	1969	Campbell & Wong & Associates	Rosewall & Sons
Merrill College Library	633 Merrill Road	Merrill College	1971	Campbell & Wong & Associates	Rosewall & Sons
Merrill College Plaza	655 Merrill Service Road	Merrill College	2015	Unknown	Unknown
Merrill College Recreation Room	633 Crown Road	Merrill College	1971	Campbell & Wong & Associates	Rosewall & Sons
Merrill Garden House	604 Merrill Road	Merrill College	1966	Unknown	Unknown

Merrill Material Recovery Enclosure	655 Merrill Service Road	Merrill College	2015	Unknown	Unknown
Merrill Ming Ong Computer Lab	630 Merrill Road	Merrill College	1991	Unknown	Unknown
Merrill Substation	610 Merrill Road	Merrill College	1990	Unknown	Unknown
Merrill Substation Shed	610 Merrill Road	Merrill College	2010	Unknown	Unknown
Merrill Substation Utility Trailer	610 Merrill Road	Merrill College	1990	Unknown	Unknown
Music Center	402 McHenry Road	Music Center Neighborhood	1996	Antoine Predock	Unknown
Nat Sci 2 Annex	570 Red Hill Road	Science and Engineering Hill	1969	Anshen & Allen	Unknown
Nat Sci 2 Main Building	560 Red Hill Road	Science and Engineering Hill	1969	Anshen & Allen	Unknown
Nat Sci Greenhouse	632 Red Hill Road	Science and Engineering Hill	1990	Unknown	Unknown
Nat Sci Paleo-Magnetic Lab	636 Red Hill Road	Science and Engineering Hill	1983	Unknown	Unknown
Nat Sci Storage 1	638 Red Hill Road	Science and Engineering Hill	1983	Unknown	Unknown
Nat Sci Woodshop	637 Red Hill Road	Science and Engineering Hill	1990	Unknown	Unknown
Oakes Co Recycling Ctr	248 Oakes Field Service Road	Oakes College	1987	Unknown	Unknown
Oakes College Academic Building	233 Oakes Road	Oakes College	1976	McCue, Boone, Tomsick	Unknown
Oakes College Academic Building	233 Oakes Road	Oakes College	1976	McCue, Boone, Tomsick	Unknown
Oakes College Dorm 1	210 Oakes Road	Oakes College	1988	Palmer & Rahe	Unknown
Oakes College Dorm 2	214 Oakes Road	Oakes College	1988	Palmer & Rahe	Unknown
Oakes College Dorm 3	216 Oakes Road	Oakes College	1988	Palmer & Rahe	Unknown
Oakes College Dorm 4	212 Oakes Road	Oakes College	1988	Palmer & Rahe	Unknown
Oakes College House	246 Oakes Field Service Road	Oakes College	1977	McCue, Boone, Tomsick	Unknown
Oakes College Residence A11-12	218 Oakes Road	Oakes College	1976	McCue, Boone, Tomsick	Unknown
Oakes College Residence A13-15	220 Oakes Road	Oakes College	1976	McCue, Boone, Tomsick	Unknown
Oakes College Residence A16-17	222 Oakes Road	Oakes College	1976	McCue, Boone, Tomsick	Unknown
Oakes College Residence B11-15	230 Oakes Road	Oakes College	1976	McCue, Boone, Tomsick	Unknown
Oakes College Residence B11-15	230 Oakes Road	Oakes College	1976	McCue, Boone, Tomsick	Unknown
Oakes College Residence B16-17	228 Oakes Road	Oakes College	1976	McCue, Boone, Tomsick	Unknown
Oakes College Residence C11-15	245 Oakes Field Service Road	Oakes College	1976	McCue, Boone, Tomsick	Unknown
Oakes College Residence D11-12	241 Oakes Field Service Road	Oakes College	1976	McCue, Boone, Tomsick	Unknown
Oakes College Residence D11-12	241 Oakes Field Service Road	Oakes College	1976	McCue, Boone, Tomsick	Unknown
Oakes College Residence D14-16	243 Oakes Field Service Road	Oakes College	1976	McCue, Boone, Tomsick	Unknown
Oakes College Residence D14-16	243 Oakes Field Service Road	Oakes College	1976	McCue, Boone, Tomsick	Unknown
Oakes College Service Module S1	224 Oakes Road	Oakes College	1976	McCue, Boone, Tomsick	Unknown
Oakes College Service Module S2	226 Oakes Road	Oakes College	1976	McCue, Boone, Tomsick	Unknown
Oakes College Service Module S3	247 Oakes Field Service Road	Oakes College	1976	McCue, Boone, Tomsick	Unknown
Oakes College Tutorial Commons	249 Oakes Field Service Road	Oakes College	1977	McCue, Boone, Tomsick	Unknown
OPERS Fitness Center	405 East Field Service Road	OPERS Eastside	1999	Boora Architects	Unknown
OPERS Offices & Support Space	451 East Field Service Road	OPERS Eastside	1988	Worley K. Wong; Ronald G. Brocchini	Unknown
OPERS Tennis Building	425 East Field Service Road	OPERS Eastside	1988	Worley K. Wong; Ronald G. Brocchini	Unknown
Physical Education Activities Building	403 East Field Service Road	OPERS Eastside	1974	UCSC Physical Planning & Construction	Unknown
Physical Planning & Construction Trailer 1	103 Ox Team Road	Main Entrance	1986	Unknown	Unknown
Physical Planning & Construction Trailer 2	105 Ox Team Road	Main Entrance	1978	Unknown	Unknown
Physical Plant Trailer 1	102 Carriage House Road	Main Entrance	1988	Unknown	Unknown
Physical Plant Trailer 1	102 Carriage House Road	Main Entrance	1988	Unknown	Unknown
Physical Plant Trailer 2	106 Carriage House Road	Main Entrance	1990	Unknown	Unknown
Physical Sciences Building	590 Steinhart Way	Science and Engineering Hill	2006	Anshen & Allen	Unknown
Porter College Academic	405 Porter-Kresge Road	Porter College	1971	Hugh Stubbins & Associates	Unknown
Porter College Academic	405 Porter-Kresge Road	Porter College	1971	Hugh Stubbins & Associates	Unknown
Porter College Academic	405 Porter-Kresge Road	Porter College	1971	Hugh Stubbins & Associates	Unknown
Porter College Academic	405 Porter-Kresge Road	Porter College	1971	Hugh Stubbins & Associates	Unknown
Porter College Academic	405 Porter-Kresge Road	Porter College	1971	Hugh Stubbins & Associates	Unknown
Porter College Academic	405 Porter-Kresge Road	Porter College	1971	Hugh Stubbins & Associates	Unknown
Porter College Academic	405 Porter-Kresge Road	Porter College	1971-1973	Hugh Stubbins & Associates	Unknown
Porter College Apartment Building E	410 Porter-Kresge Road	Porter College	2004	BAR Architects	Unknown
Porter College Apartment Building F	414 Porter-Kresge Road	Porter College	2004	BAR Architects	Unknown
Porter College Apartment Building G	412 Porter-Kresge Road	Porter College	2004	BAR Architects	Unknown
Porter College Apartment Building H	416 Porter-Kresge Road	Porter College	2004	BAR Architects	Unknown
Porter College Apartments Lounge	418 Porter-Kresge Road	Porter College	2004	BAR Architects	Unknown
Porter College Dining Common	411 Porter-Kresge Road	Porter College	1971	Hugh Stubbins & Associates	Unknown

Porter College House	415 Porter-Kresge Road	Porter College	1983	Corlett & Spackman	Unknown
Porter College House A	407 Porter-Kresge Road	Porter College	1971	Hugh Stubbins & Associates	Unknown
Porter College House B	409 Porter-Kresge Road	Porter College	1971	Hugh Stubbins & Associates	Unknown
Powder House	90 Ranch View Road	Main Entrance	1850s, circa	Unknown	Unknown
Quarry Amphitheater	514 Steinhart Way	Quarry Plaza	1967	Robert Royston	Unknown
Quarry Amphitheater Storage	514 Steinhart Way	Quarry Plaza	1973	Unknown	Unknown
Rachel Carson College Academic Building	355 Rachel Carson Road	Rachel Carson College	1990	Simon, Martin, Vegue, Winkelstein, Moris	Unknown
Rachel Carson College Apartment Building 1	351 Rachel Carson Road	Rachel Carson College	1990	Palmer & Rahe	George Shaw
Rachel Carson College Apartment Building 2	353 Rachel Carson Road	Rachel Carson College	1990	Palmer & Rahe	George Shaw
Rachel Carson College Apartment Building 3	313 Rachel Carson Service Road	Rachel Carson College	1990	Palmer & Rahe	George Shaw
Rachel Carson College Apartment Building 4	315 Rachel Carson Service Road	Rachel Carson College	1990	Palmer & Rahe	George Shaw
Rachel Carson College Apartment Building 5	314 Rachel Carson Service Road	Rachel Carson College	1990	Palmer & Rahe	George Shaw
Rachel Carson College Apartment Building 6	312 Rachel Carson Service Road	Rachel Carson College	1990	Palmer & Rahe	George Shaw
Rachel Carson College Cafe Building	355 Rachel Carson Road	Rachel Carson College	1990	Simon, Martin, Vegue, Winkelstein, Moris	Unknown
Rachel Carson College Dorm A-Garden	308 Rachel Carson Service Road	Rachel Carson College	1989	Simon, Martin, Vegue, Winkelstein, Moris	Unknown
Rachel Carson College Dorm A-L-Building	306 Rachel Carson Service Road	Rachel Carson College	1989	Simon, Martin, Vegue, Winkelstein, Moris	Unknown
Rachel Carson College Dorm B-Garden	302 Rachel Carson Service Road	Rachel Carson College	1990	Simon, Martin, Vegue, Winkelstein, Moris	Unknown
Rachel Carson College Dorm B-L-Building	304 Rachel Carson Service Road	Rachel Carson College	1990	Simon, Martin, Vegue, Winkelstein, Moris	Unknown
Rachel Carson College Dorm C-Garden	307 Rachel Carson Service Road	Rachel Carson College	1989	Simon, Martin, Vegue, Winkelstein, Moris	Unknown
Rachel Carson College Dorm C-L-Building	305 Rachel Carson Service Road	Rachel Carson College	1989	Simon, Martin, Vegue, Winkelstein, Moris	Unknown
Rachel Carson College Dorm D-Garden	301 Rachel Carson Service Road	Rachel Carson College	1989	Simon, Martin, Vegue, Winkelstein, Moris	Unknown
Rachel Carson College Dorm D-L-Building	303 Rachel Carson Service Road	Rachel Carson College	1989	Simon, Martin, Vegue, Winkelstein, Moris	Unknown
Rachel Carson College Kitchen	354 Rachel Carson Road	Rachel Carson College	1990	Simon, Martin, Vegue, Winkelstein, Moris	Unknown
Rachel Carson College Kitchen	354 Rachel Carson Road	Rachel Carson College	1990	Simon, Martin, Vegue, Winkelstein, Moris	Unknown
Rachel Carson College Student Commons	310 Rachel Carson Service Road	Rachel Carson College	1990	Simon, Martin, Vegue, Winkelstein, Moris	Unknown
Receiving Barn (Barn H)	116 Ox Team Road	Main Entrance	1860s, circa	Unknown	Unknown
Redwood Grove Apartments Building 12	525 Heller Drive	Kresge College	1988	Unknown	Unknown
Redwood Grove Apartments Building 13	535 Heller Drive	Kresge College	1988	Unknown	Unknown
Redwood Grove Apartments Building 14	545 Heller Drive	Kresge College	1988	Unknown	Unknown
Redwood Grove Apartments Building 15	555 Heller Drive	Kresge College	1988	Unknown	Unknown
Redwood Grove Apartments Building 16	565 Heller Drive	Kresge College	1988	Unknown	Unknown
Redwood Grove Apartments Utility Building	549 Heller Drive	Kresge College	1988	Unknown	Unknown
RV Park Recreation Building	701 Leonardo Lane	North Campus	1984	Unknown	Unknown
School Age Child Care Modular Unit	560 Koshland Way	Family Student Housing	2000	Unknown	Unknown
Science and Engineering Library	580 Red Hill Road	Science and Engineering Hill	1991	Esherrick Homsey Dodge & Davis (EHDD)	Unknown
Sign Shop	107 Ox Team Road	Main Entrance	1965	Unknown	Unknown
Sinsheimer Laboratories	582 Steinhart Way	Science and Engineering Hill	1989	ED2 International	Unknown
Social Sciences 1	704 College Nine Road	College Nine	1994	Unknown	Unknown
Social Sciences 2	712 College Ten Road	College Ten	1995	Esherrick Homsey Dodge & Davis (EHDD)	Unknown
Solar Greenhouse by Merrill	606 Merrill Road	Chadwick Garden	1978	Unknown	Unknown
South Campus Core Building	108 Carriage House Road	Main Entrance	2014	Unknown	Unknown
Stevenson College	540 Stevenson Service Road	Stevenson College	1968	Joseph Esherrick & Assoc.	William & Burrows
Stevenson College Academic Building	530 Cowell-Stevenson Road	Stevenson College	1966	Joseph Esherrick & Assoc.	William & Burrows
Stevenson College Academic Building	530 Cowell-Stevenson Road	Stevenson College	1966	Joseph Esherrick & Assoc.	William & Burrows
Stevenson College Apartment Building 10	553 Stevenson Service Road	Stevenson College	2004	BAR Architects	Unknown
Stevenson College Apartment Building 11	555 Stevenson Service Road	Stevenson College	2004	BAR Architects	Unknown
Stevenson College Apartment Building 9	551 Stevenson Service Road	Stevenson College	2004	BAR Architects	Unknown
Stevenson College House	537 Stevenson Service Road	Stevenson College	1967	Joseph Esherrick & Assoc.	William & Burrows
Stevenson College House 1	532 Stevenson Service Road	Stevenson College	1966	Joseph Esherrick & Assoc.	William & Burrows
Stevenson College House 2	534 Stevenson Service Road	Stevenson College	1966	Joseph Esherrick & Assoc.	William & Burrows
Stevenson College House 3	536 Stevenson Service Road	Stevenson College	1966	Joseph Esherrick & Assoc.	William & Burrows
Stevenson College House 4	538 Stevenson Service Road	Stevenson College	1966	Joseph Esherrick & Assoc.	William & Burrows
Stevenson College House 5	541 Stevenson Service Road	Stevenson College	1966	Joseph Esherrick & Assoc.	William & Burrows
Stevenson College House 6	543 Stevenson Service Road	Stevenson College	1966	Joseph Esherrick & Assoc.	William & Burrows
Stevenson College House 7	545 Stevenson Service Road	Stevenson College	1966	Joseph Esherrick & Assoc.	William & Burrows
Stevenson College House 8	547 Stevenson Service Road	Stevenson College	1966	Joseph Esherrick & Assoc.	William & Burrows
Stevenson College Music Practice	535 Stevenson Service Road	Stevenson College	1975	Unknown	Unknown
Stevenson Preceptor House	532 Stevenson Service Road	Stevenson College	1967	Joseph Esherrick & Assoc.	William & Burrows

Stone House (Paymaster's House)	100 Coolidge Drive	Main Entrance	1860s, circa	Unknown	Unknown
Student Music East-KZSC Radio Station	631 Crown Road	Crown College / Merrill College	1967	UCSC staff	Unknown
Student Union	504 Steinhart Way	Quarry Plaza	1971	Bull Field Volkmann Stockwell	Unknown
Student Union Redwood	502 Steinhart Way	Quarry Plaza	1967	Henrik Bull	Unknown
Theater Arts A Main Stage	441 Kerr Road	Theater Arts Center	1971	Ralph Rapson & Associates	Unknown
Theater Arts B Drama	465 Kerr Road	Theater Arts Center	1971	Ralph Rapson & Associates	Unknown
Theater Arts C Studio	463 Kerr Road	Theater Arts Center	1971	Ralph Rapson & Associates	Unknown
Theater Arts D Student Production	461 Kerr Road	Theater Arts Center	1971	Ralph Rapson & Associates	Unknown
Theater Arts E Classroom	459 Kerr Road	Theater Arts Center	1971	Ralph Rapson & Associates	Unknown
Theater Arts F Ticket Office	457 Kerr Road	Theater Arts Center	1971	Ralph Rapson & Associates	Unknown
Theater Arts Foundry	410 Foundry Road	Theater Arts Center	1975	Ralph Rapson & Associates	Unknown
Theater Arts G Toilet Room	447 Kerr Road	Theater Arts Center	1971	Ralph Rapson & Associates	Unknown
Theater Arts H 2nd Stage	451 Kerr Road	Theater Arts Center	1971	Ralph Rapson & Associates	Unknown
Theater Arts H 2nd Stage	451 Kerr Road	Theater Arts Center	1971	Ralph Rapson & Associates	Unknown
Theater Arts J Offices	445 Kerr Road	Theater Arts Center	1971	Ralph Rapson & Associates	Unknown
Theater Arts K Costume	443 Kerr Road	Theater Arts Center	1986	Unknown	Unknown
Theater Arts L Experimental Theater	455 Kerr Road	Theater Arts Center	1998	Unknown	Unknown
Theater Arts M Media Theater	453 Kerr Road	Theater Arts Center	1998	Unknown	Unknown
Theater Barn	101 Coolidge Drive	Main Entrance	1850s	Unknown	Unknown
Thimann Laboratories	568 Steinhart Way	Quarry Plaza	1965	Anshen & Allen	Nomellini Construction Co.
Thimann Lecture Hall	562 Steinhart Way	Quarry Plaza	1965	Anshen & Allen	Nomellini Construction Co.
Thimann Receiving Building	572 Steinhart Way	Quarry Plaza	1965	Anshen & Allen	Nomellini Construction Co.
University House	400 McHenry Road	Central Core	1967	Ratcliff Slama Cadwalader	Unknown
Village Dining	259 Village Road	Lower Quarry Village Housing	2001	Unknown	Unknown
Village Housing B1	216 Village Road	Lower Quarry Village Housing	1997	Unknown	Unknown
Village Housing B2	212 Village Road	Lower Quarry Village Housing	1997	Unknown	Unknown
Village Housing B3	214 Village Road	Lower Quarry Village Housing	1997	Unknown	Unknown
Village Housing C1	222 Village Road	Lower Quarry Village Housing	1997	Unknown	Unknown
Village Housing C2	224 Village Road	Lower Quarry Village Housing	1997	Unknown	Unknown
Village Housing C3	226 Village Road	Lower Quarry Village Housing	1997	Unknown	Unknown
Village Housing C4	230 Village Road	Lower Quarry Village Housing	1997	Unknown	Unknown
Village Housing C5	228 Village Road	Lower Quarry Village Housing	1997	Unknown	Unknown
Village Housing C6	232 Village Road	Lower Quarry Village Housing	1997	Unknown	Unknown
Village Housing D1	241 Village Road	Lower Quarry Village Housing	1997	Unknown	Unknown
Village Housing D2	243 Village Road	Lower Quarry Village Housing	1997	Unknown	Unknown
Village Housing E1	245 Village Road	Lower Quarry Village Housing	1997	Unknown	Unknown
Village Housing E2	251 Village Road	Lower Quarry Village Housing	1997	Unknown	Unknown
Village Housing E3	249 Village Road	Lower Quarry Village Housing	1997	Unknown	Unknown
Village Housing E4	247 Village Road	Lower Quarry Village Housing	1997	Unknown	Unknown
Village Housing F1	255 Village Road	Lower Quarry Village Housing	1997	Unknown	Unknown
Village Housing F2	253 Village Road	Lower Quarry Village Housing	1997	Unknown	Unknown
Village Housing F3	257 Village Road	Lower Quarry Village Housing	1997	Unknown	Unknown
Village Housing F5	260 Village Road	Lower Quarry Village Housing	1997	Unknown	Unknown
Village Maintenance & Telecommunications	217 Village Road	Lower Quarry Village Housing	2001	Unknown	Unknown
Visual Arts Research Facility	350 Rachel Carson Road	Rachel Carson College	1982	Unknown	Unknown
Westside Research Center	2300 Delaware Avenue	South of campus	1980	Unknown	Unknown

Unknown	Hugh Stubbins; Thomas Church	Not surveyed	Not surveyed (post-1979)
Clarence E. Rinne	Thomas Church	Surveyed: Campus Core Contributor	
Clarence E. Rinne	Thomas Church	Surveyed: Campus Core Contributor	
Unknown	Unknown	Surveyed: Cowell Ranch Historic District Contributor	
Unknown	Robert Royston	Not surveyed	Reconnaissance survey
Unknown	Unknown	Not surveyed	Not surveyed
Unknown	Wallace Roberts Todd	Not surveyed	Not surveyed (post-1979)
Unknown	Thomas Scherer	Not surveyed	Not surveyed (post-1979)
Unknown	Thomas Scherer	Not surveyed	Not surveyed (post-1979)
Unknown	Thomas Scherer	Not surveyed	Not surveyed (post-1979)
Unknown	Thomas Scherer	Not surveyed	Not surveyed (post-1979)
Unknown	Thomas Scherer	Not surveyed	Not surveyed (post-1979)
Unknown	Wallace Roberts Todd	Not surveyed	Not surveyed (post-1979)
Unknown	Wallace Roberts Todd	Not surveyed	Not surveyed (post-1979)
Unknown	Wallace Roberts Todd	Not surveyed	Not surveyed (post-1979)
Unknown	Wallace Roberts Todd	Not surveyed	Not surveyed (post-1979)
Unknown	Wallace Roberts Todd	Not surveyed	Not surveyed (post-1979)
Unknown	Wallace Roberts Todd	Not surveyed	Not surveyed (post-1979)
Unknown	Wallace Roberts Todd	Not surveyed	Not surveyed (post-1979)
Unknown	Wallace Roberts Todd	Not surveyed	Not surveyed (post-1979)
Unknown	Wallace Roberts Todd	Not surveyed	Not surveyed (post-1979)
Unknown	Wallace Roberts Todd	Not surveyed	Not surveyed (post-1979)
Unknown	Wallace Roberts Todd	Not surveyed	Not surveyed (post-1979)
Unknown	Wallace Roberts Todd	Not surveyed	Not surveyed (post-1979)
Unknown	Wallace Roberts Todd	Not surveyed	Not surveyed (post-1979)
Unknown	Unknown	Surveyed: Cowell Ranch Historic District Non-Contributor	
Unknown	Unknown	Not surveyed	Not surveyed (post-1979)
Unknown	Unknown	Not surveyed	Not surveyed (post-1979)
Unknown	Unknown	Not surveyed	Not surveyed (post-1979)
Unknown	Unknown	Not surveyed	Not surveyed (post-1979)
Unknown	Unknown	Not surveyed	Not surveyed (post-1979)
Unknown	Unknown	Not surveyed	Not surveyed (post-1979)
Unknown	Unknown	Not surveyed	Not surveyed (post-1979)
Unknown	Unknown	Not surveyed	Not surveyed (post-1979)
Unknown	Unknown	Not surveyed	Not surveyed (post-1979)
Unknown	Nishita and Carter	Not surveyed	Not surveyed (post-1979)
Unknown	Unknown	Not surveyed	Reconnaissance survey
Unknown	SWA Group	Not surveyed	Not surveyed (post-1979)
Unknown	Unknown	Not surveyed	Not surveyed (post-1979)
Unknown	Unknown	Not surveyed	Not surveyed (post-1979)
Unknown	Unknown	Not surveyed	Reconnaissance survey
Unknown	Unknown	Not surveyed	Not surveyed (post-1979)
Unknown	Lawrence Halprin & Assoc.	Surveyed: Campus Core Contributor	
Unknown	Lawrence Halprin & Assoc.	Surveyed: Campus Core Contributor	
Unknown	Lawrence Halprin & Assoc.	Surveyed: Campus Core Contributor	
Unknown	Unknown	Not surveyed	Not surveyed (post-1979)
Unknown	Unknown	Not surveyed	Not surveyed (post-1979)
Unknown	Unknown	Not surveyed	Not surveyed (post-1979)
Unknown	Lawrence Halprin & Assoc.	Surveyed: Campus Core Contributor	
Unknown	Lawrence Halprin & Assoc.	Surveyed: Campus Core Contributor	
Unknown	Lawrence Halprin & Assoc.	Surveyed: Campus Core Contributor	
Unknown	Lawrence Halprin & Assoc.	Surveyed: Campus Core Contributor	
Unknown	Lawrence Halprin & Assoc.	Surveyed: Campus Core Contributor	
Unknown	Lawrence Halprin & Assoc.	Surveyed: Campus Core Contributor	
Unknown	Lawrence Halprin & Assoc.	Surveyed: Campus Core Contributor	
Unknown	Lawrence Halprin & Assoc.	Surveyed: Campus Core Contributor	
Unknown	Unknown	Not surveyed	Not surveyed (post-1979)
Unknown	Lawrence Halprin & Assoc.	Surveyed: Campus Core Contributor	

